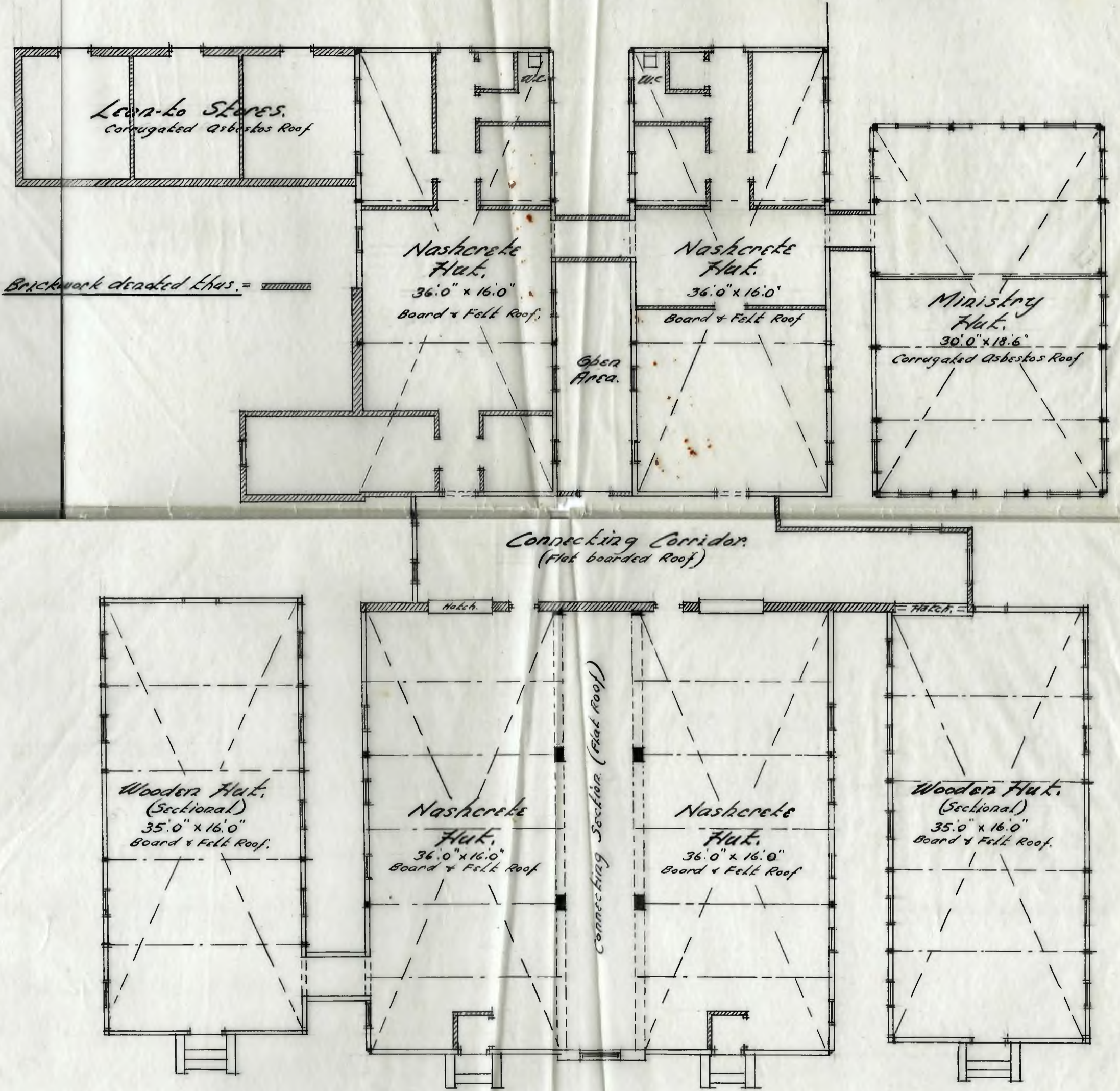


**1ST TOTLEY  
SCOUT GROUP**

**HUTMENT  
PLANS**



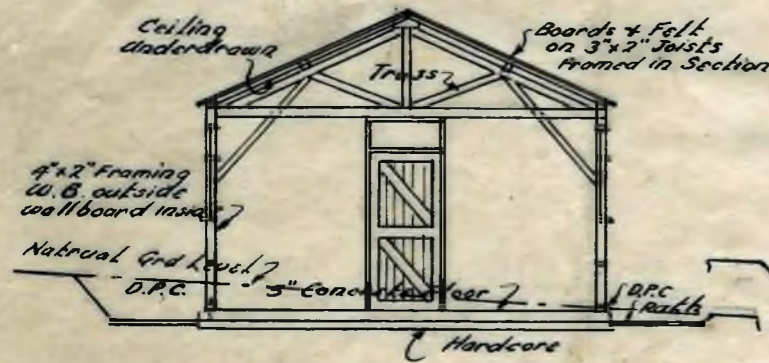
1st Tolley Troop Scouts.  
Plan of Hutments at Redmires Camp.



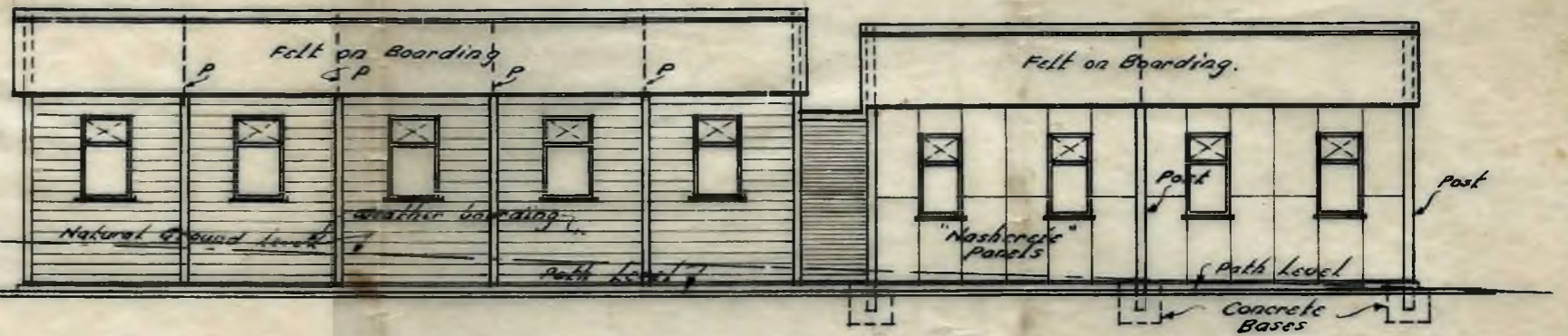
Ground Floor Plan.

Scale 1 Inch = 8 Feet.

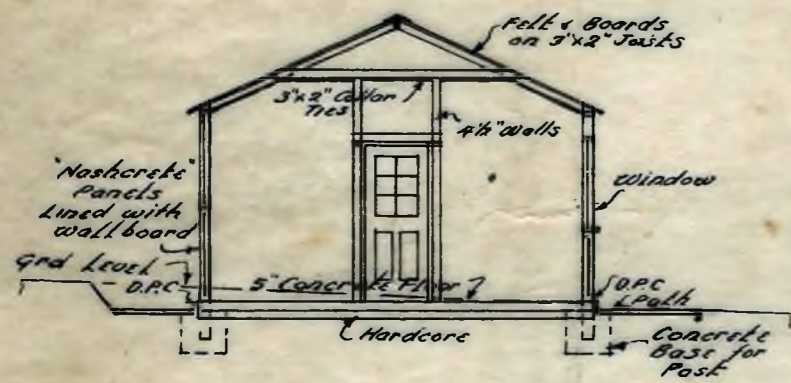




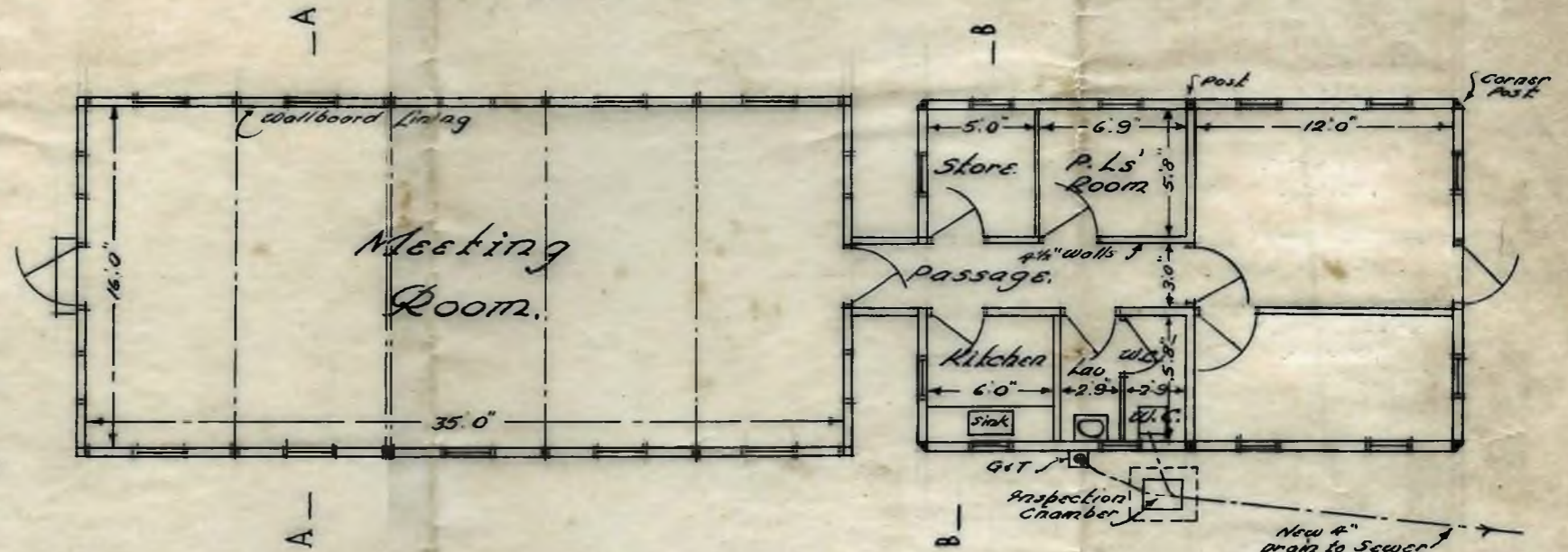
SECTION A-A



FRONT ELEVATION.



SECTION B-B.

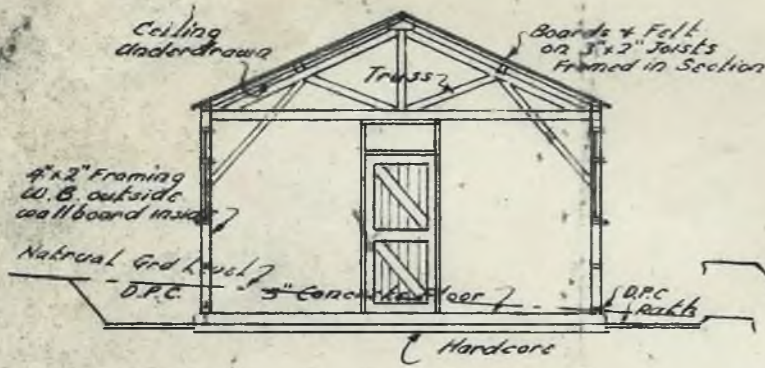


GROUND FLOOR PLAN.

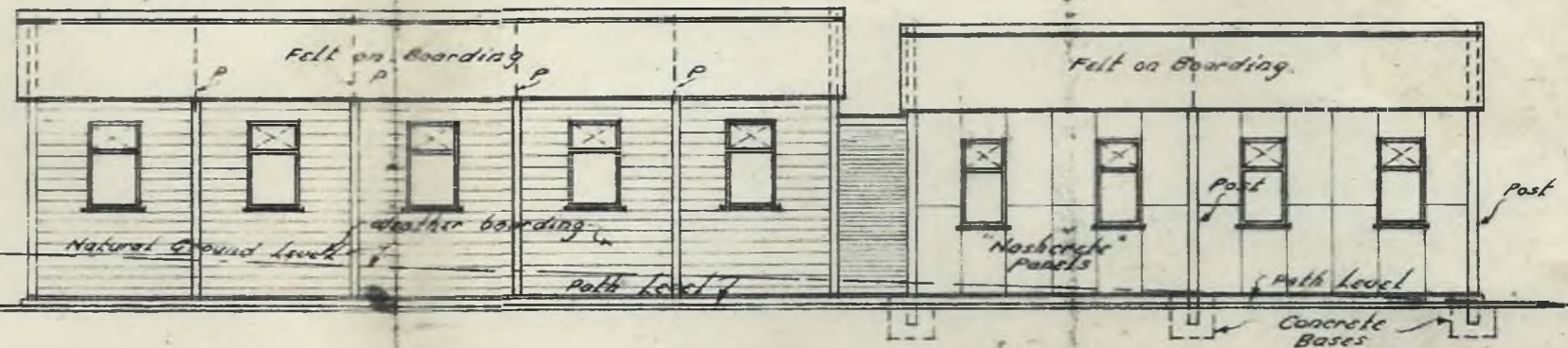
Scale: Eight Feet to One Inch.

1<sup>ST</sup> TOTLEY GROUP BOY SCOUTS  
 PROPOSED RE-ERECTION OF HUTMENTS  
 AS GROUP HEADQUARTERS.

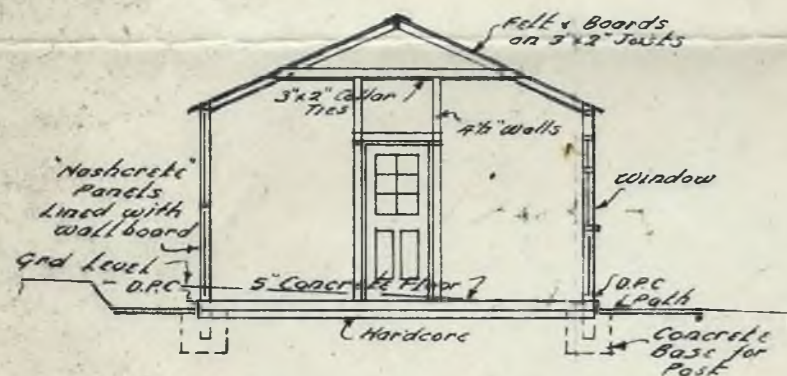




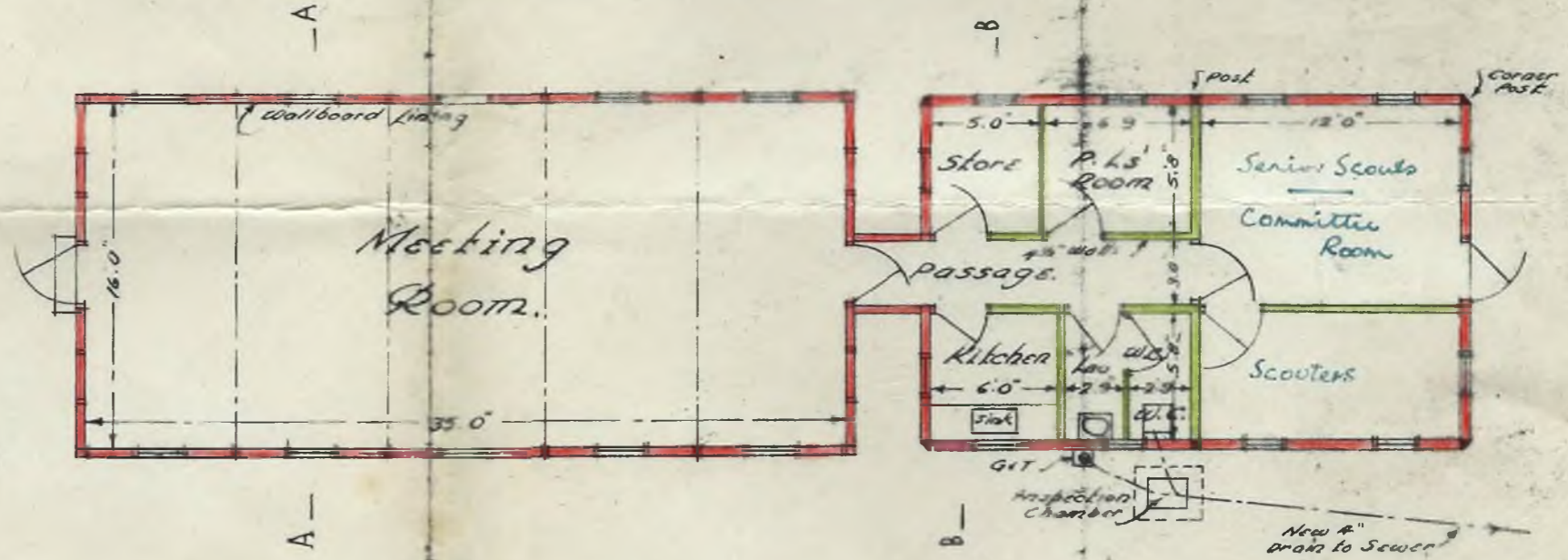
SECTION A-A



FRONT ELEVATION.



SECTION B-B.



GROUND FLOOR PLAN.

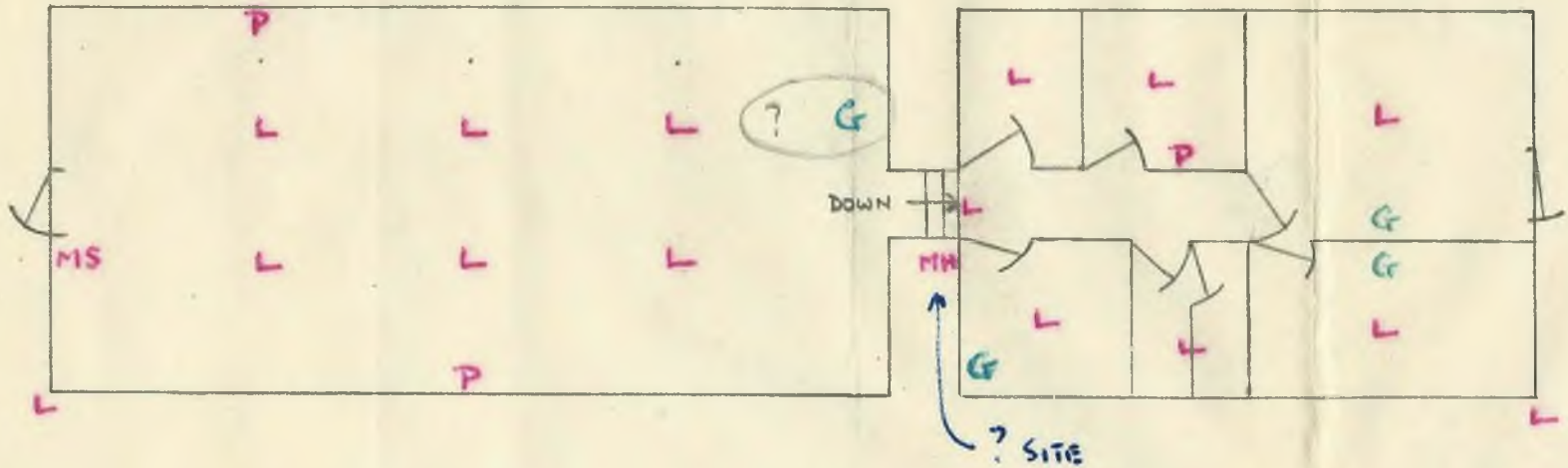
Scale - Eight Feet to One Inch.

1<sup>ST</sup> TOTLEY GROUP BOY SCOUTS  
 PROPOSED RE-ERECTION OF HUTMENTS  
 AS GROUP HEADQUARTERS.



# 1ST TOTLEY SCOUT GROUP HEADQUARTERS

TOTLEY HALL LANE



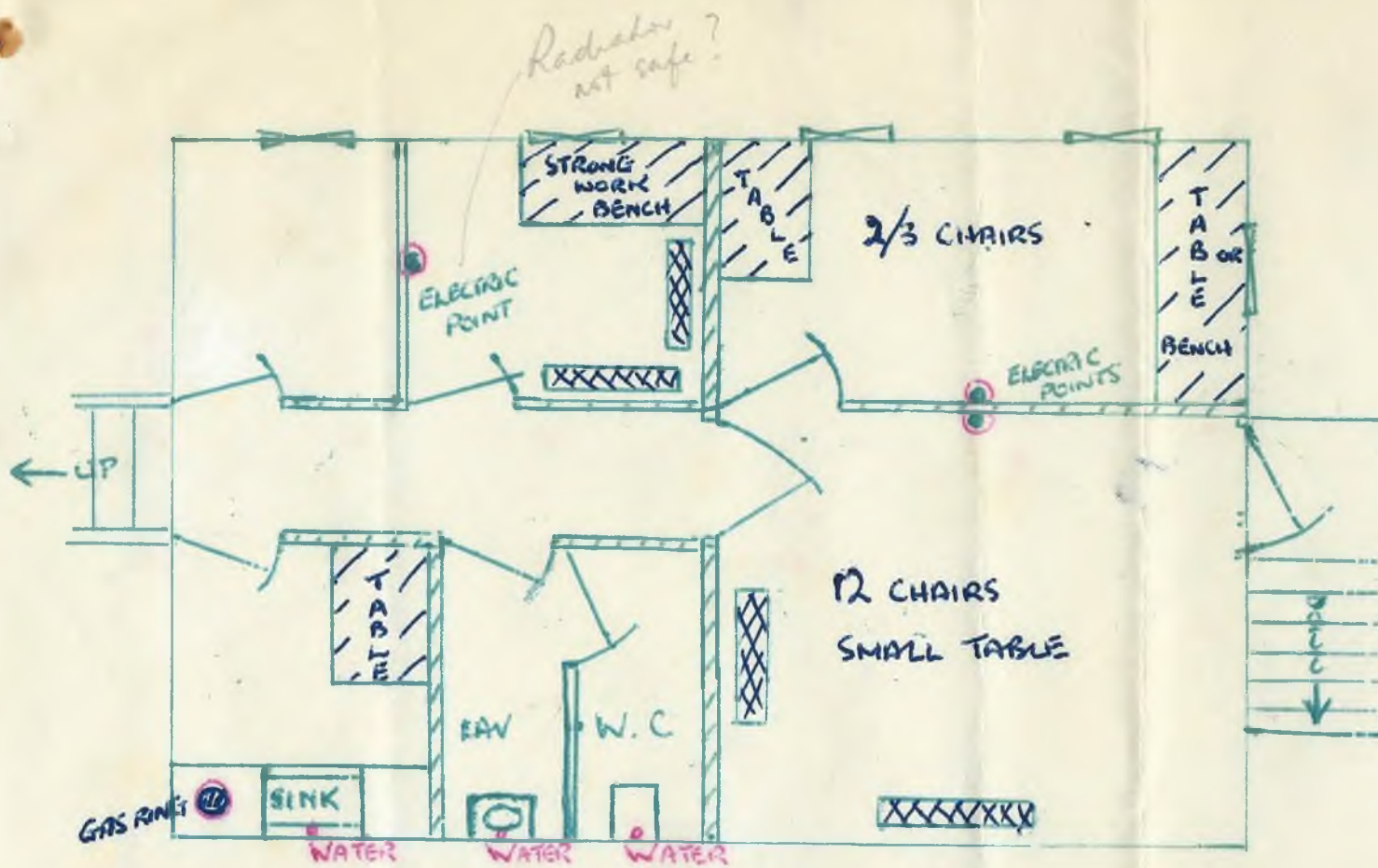
G = GAS POINTS


L = ELECTRIC LIGHT

P = POWER POINT

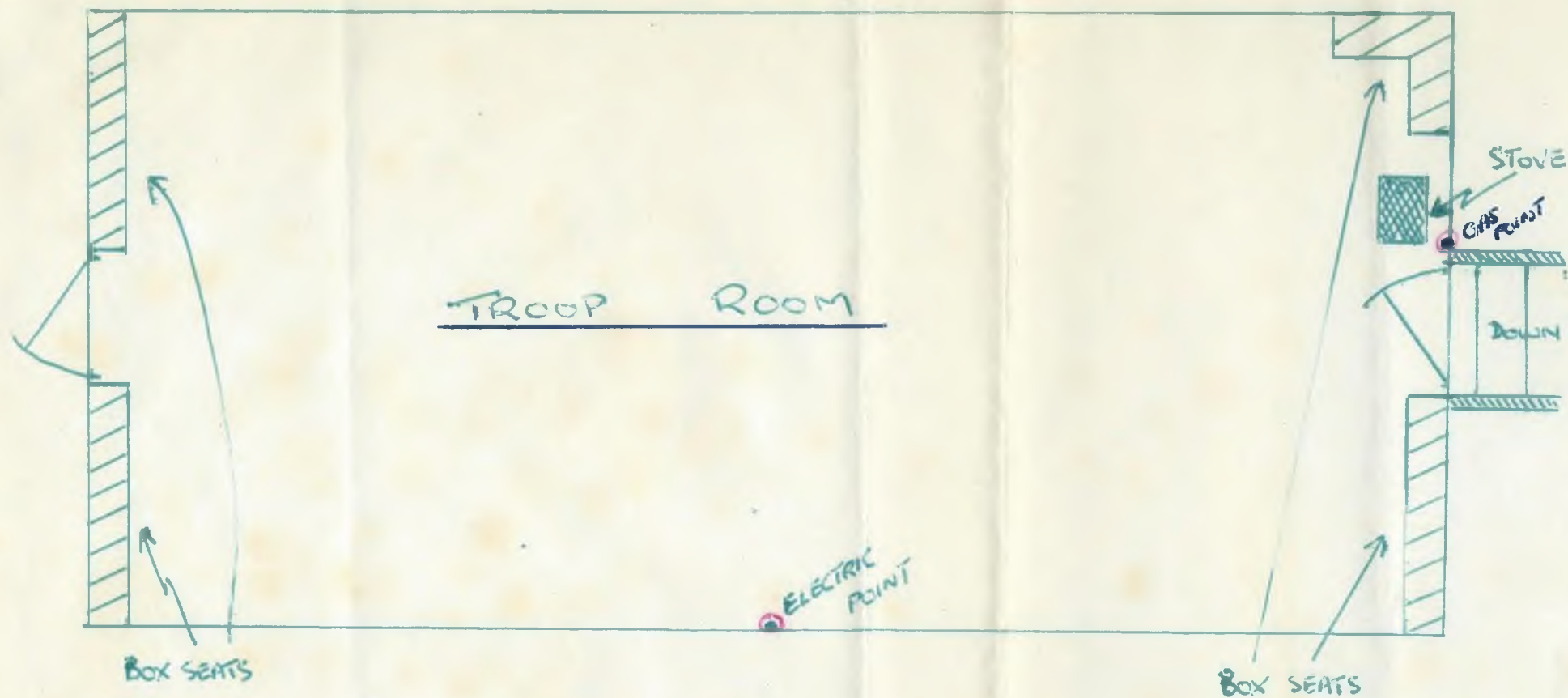
MS = MASTER SWITCH

MH = METER HOUSE (? SITE)



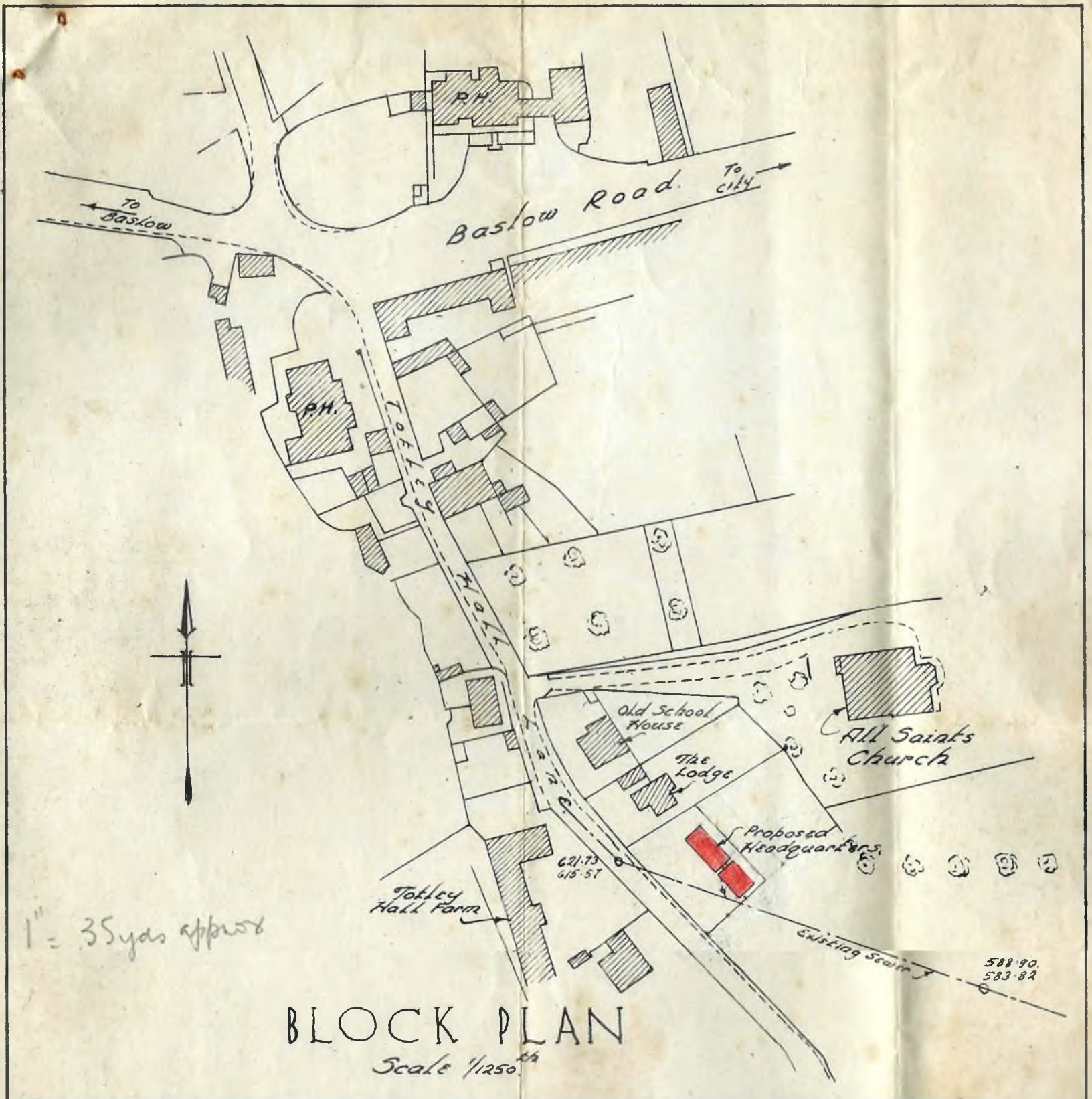
1.  = FORMS, WHICH WE ALREADY HAVE
2. BENCHES OR TABLES SHOWN CAN BE CONSTRUCTED, OR USE MADE OF SMALL TABLES REQUIRED FOR "SOCIAL" FUNCTIONS.
3. IF WE HAD SUFFICIENT TABLES AND CHAIRS FOR "SOCIAL" FUNCTIONS, NO OTHER FURNITURE WOULD BE NECESSARY





1. THE ONLY FURNITURE REQUIRED FOR SCOUT PURPOSES WILL BE THE BOX SEATS SHOWN ABOVE — ONE SEAT FOR EACH PATROL.
2. THE STOVE HAS BEEN PUT AT THE END BECAUSE IT WOULD BE DANGEROUS ELSEWHERE WHEN GAMES ARE BEING PLAYED.
3. IT WOULD BE AN ADVANTAGE TO HAVE A GAS POINT (FOR A GASPOKER) NEAR THE STOVE.
4. SHOULD THE DOOR LEADING INTO THE SECOND HUT OPEN OUTWARDS FROM THE WOODEN BUILDING?





1<sup>ST</sup> TOTLEY GROUP BOY SCOUTS.  
 PROPOSED RE-ERECTION OF HUTMENTS.  
 AS GROUP HEADQUARTERS.