



# All Saints' News

JANUARY 1966

Threepence

## A Happy New Year

WE do not intend to have banner headlines in two languages for our parish newspaper every month. We have done so this month to remind us of the visit of Miss Ann Richens. The Chinese Headline means A HAPPY NEW YEAR.

At the start of another year we must remember that the Church is not just concerned with a Happy New Year for ourselves, but for all the world. For the Christian, happiness consists in the joy of our commitment to the service of our Lord and our fellowmen.

### *The Vicar writes:*

#### December Retrospect

The first thing I must do in my letter this month is say "Thank you" to all who helped to make our celebration of our Lord's birthday such a memorable one, from smallest choirboy to tallest server, and the Guides who made our Christmas tree so beautiful with decorations given by the Ladies Club.

I must particularly congratulate the Church School on the Christmas Nativity Play and Carol Service they held this year, which was prepared under very difficult conditions.

This year, for the first time, the College of Education held their Carol Service in Church.

Many people have told me how much they appreciated the Sunday School Children's Service, which represented so much hard work by the teachers, and I must admit that I am pleasantly haunted by the action song that the Kindergarten sang—"Come and see the Holy Baby.

#### Unity

December was also memorable because of the united service and prayers for the mission of the Church in which we joined with our Methodist friends on St.



Andrew's Day. I know that all of us were moved by the direct sincerity of the Revd. Leslie Seaman's address, and the discussion afterwards showed how clearly he had spoken. I look forward to many more occasions for deepening our fellowship and understanding.

#### Ann Richens

We were very Overseas-minded in December because of the visit of Miss Ann Richens, a nurse working for C.M.S. in Malaya, who is to be our overseas correspondent. Though she was only in

the parish for two days, she managed to talk to Cubs and Brownies, Guides, A.Y.P.A., and the children of the Church School; she met about 40 members of our congregation at a coffee morning in the Vicarage, and some of the students at the College of Education (we are most grateful to Miss Trow for making this possible). There was also a meeting in the parish hall on Thursday evening, at which Miss Richens spoke. All who met her were impressed by her complete dedication to the work she is doing. We look

新  
年  
快  
樂

With the compliments of

VERNON HUDSON DECORATOR AND PAINTING CONTRACTOR

241 Chesterfield Road, Dronfield, Tel. 2377.

For Freshly Ground Coffee  
For all groceries, provisions,  
sweets, beer, wines, spirits and  
tobacco, etc.  
If you telephone 365038 and  
give us your order we will be  
pleased to deliver it to your  
home in one of our vans

### GRATTON'S

71 BASLOW ROAD,  
Totley Rise, Sheffield  
FULLY LICENSED

Branch: 251 BASLOW ROAD  
Tel. 3 6 1 3 5 9

IT IS SO EASY TO USE  
FRANKLIN'S CLEANING and  
RENOVATION SERVICES

'Phone 7 8 5 7 1

FOR IMMEDIATE COLLECTION

24 Page Information and Price  
Guide Post Free



6 ECCLESALL ROAD

### A. E. PASHLEY Family Butcher

249 BASLOW ROAD,  
(Main Avenue)  
TOTLEY

'Phone 360634

Fine Lamb, Beef, Pork & Poultry

Try our Speciality Sausages

Orders Delivered Daily

### BANNERDALE LAUNDRY LTD.

For guaranteed satisfaction in  
Quality and Service

LITTLE LONDON ROAD,  
SHEFFIELD, 8

'Phone 5 0 4 7 2 for particulars

If it's Wool, Nylon or Cotton,  
Knitted or Woven for Knitting  
or Sewing for all the Family . .

### I. WHITEHEAD

47 BASLOW ROAD  
Totley Rise  
Tel. 362917

Everything for the home dress-  
maker including Belt & Button  
Service. Wide range of Gents  
Underwear, Shirts, Ties etc.

Good selection of Ladies  
Cardigans, Jumpers & Underwear

### WILLARS

49 BASLOW ROAD  
Totley Rise

'Phone 360390

For Men's, Ladies' and  
Childrens Footwear

Gluv, Tuf, Devonshire, Eagle &  
other makes in stock

High Class Footwear Repairs  
Wellingtons always in stock

### WILLIAM BURTON, M.P.S.

Dispensing Chemist

'Phone 361181

45 BASLOW ROAD,  
Totley Rise

Toilet and Beauty Preparations  
including

Revlon

Coty

Max Factor

Yardley

Nat. Health Insurance Dispensing

### N. B. SHIPLEY

164 BASLOW ROAD,  
TOTLEY  
Tel. 365178

KNITTING WOOL

NYLONS

GENERAL DRAPERY

### THE TOTLEY BRIDGE GARAGE LTD.

MOTOR ENGINEERS

TOTLEY RISE

Mobil Petrol and Oils

Paraffin Smokeless Fuel

Standard Triumph Stockists

R.A.C. Agents—Recovery Service  
DAY (360376) NIGHT (361624)

Crypton Tuning

### TOTLEY FRUIT STORE

166 BASLOW ROAD  
Tel. 364073

Fresh Flowers, Fruit  
and Vegetables

Orders Delivered Daily

Floral Arrangements, Wedding  
Bouquets and Funeral Flowers  
our Speciality

forward to hearing from her  
when she returns to Malaya  
in the New Year, and we can  
all—by our prayers—support  
her in her work.

The long range weather  
forecast for the early months  
of 1966 is not very cheering,  
and is especially frightening  
for the elderly and house-  
bound. Perhaps we should  
have less time to grumble  
about it if we made sure that  
we were being good neigh-  
bours to those who need us.  
Our concern for the war in  
Vietnam, the problems of  
Malaya and the crisis in  
Rhodesia looks tarnished if  
we are not doing our Christ-  
ian duty at home. The only  
resolution for the Christian  
in the New Year is to streng-  
then our obedience to our  
Lord's command—to love our  
neighbours as ourselves.

Yours sincerely,

RHYS WALTERS.

### Congratulations

Many of you know that Mr.  
Vernon Mather is preparing  
to become a Lay Reader. He  
has been sitting the examina-  
tions of the Central Readers'  
Board, and last month not  
only passed two papers but  
gained distinction in one  
subject. This is a very fine  
achievement, and we offer  
him our sincerest congratu-  
lations. He has still one paper  
to take.

### Sympathy

We were all shocked to  
hear of the death of Mr.  
Keith Reynolds in a car crash  
last month. We extend our  
deepest sympathy to his  
parents here in Totley, and to  
his young wife and son who  
live in Chesterfield.

### Church School Notes

A collection taken at the  
Nativity Play and Carol  
Concert raised £17.15.0 for the  
School's Christmas Charity  
Appeal.

Reminder. The new term  
starts on Tuesday, January  
11th.

### Parish Registers

Baptism

Dec. 19—Helen Rosemary  
Drewery.

Wedding

Dec. 20—Peter Gourlay and  
Nova Stamp.

Have YOU got a voice?  
THE ANNUAL PARISH MEETING  
in the Parish Hall  
February 16th.

At this meeting we  
1966 and the mem  
There will be a repo  
Council for the p  
accounts will be rece

Annual Parish Meet  
ings can be very excit  
if we take them seriou  
ly; they are the way  
which every member  
the congregation ca  
have a say about the li  
of the Church in th  
parish, and indeed ou  
side. To attend and vot  
all you have to do is  
have your name enter  
on the parish roll, an  
this is very simple if yo  
are 17 years of age an  
upwards and a baptiz  
member of the Churc  
of England, either res  
dent in the parish o  
having All Saints a  
your regular place  
worship; all that is nee  
ed is that you should f  
up one of the form  
which will be availab  
in church until Januar  
23rd.

We hope that ever  
member of the congr  
gation will make a ver  
special effort to be pr  
sent at the parish mee  
ing. It is far better i  
instead of grumbling  
quietly to ourselve  
about something that w  
think is wrong, we tak  
this opportunity to com  
and speak our minds.

### PARISH N OUR

Sundays:

8.00 a.m. The Holy C

9.00 a.m. Morning Pra

9.30 a.m. The Family

11.00 a.m. The Holy C

the month a

2.30 p.m. Sunday Scho

6.30 p.m. Evensong an

Full details of Weekday S  
porch notice board

The Vicar will usually be  
7.0 p.m. to meet anyone wh  
for Baptisms and Weddings

MEETING will be held  
7.30 p.m. on Wednesday,

et the Churchwardens for  
of our Church Council.  
n the proceedings of the  
year, and the audited

### Ladies Club

(C. B. Greenhoff)

We are hoping to have  
a very good party on its  
new date Tues., January  
4th about which all our  
members have been notified.  
Our Annual General  
Meeting will be held on  
Tues., January 18th and  
on Tues., February 1st.  
Lt. Col. Gerald Haythorn-  
thwaite is giving a talk  
and lantern slide show on  
the preservation of rural  
England. I am sure this  
will be a most interesting  
evening which I hope is  
well supported.

### Forgotten Something ?

Have you forgotten to  
return your Children's  
Society Advent Purse ?  
If you have, please bring  
it next Sunday, so we  
can send our gift from  
the parish.

### Mother's Union live it up

The Christmas Party  
given by the Mothers'  
Union on December 14th  
was a great success.  
The members had invited  
as their guests over  
thirty of our "senior  
citizens". At the end  
of the afternoon the  
mothers looked exhaust-  
ed, but the guests could  
have gone on till the  
small hours !

### ICE BOARD

#### DRSHIP

union  
union  
union (on the first Sunday of  
s announced)

mon  
s are to found on the church

urch on Monday from 6.30 to  
shes to see him and to arrange

### Mens' Society

At the A.G.M. the following  
officers were elected for 1966  
*Chairman* - Keith Blackburn  
*Secretary* - Malcolm Thomson  
*Treasurer* - Vernon Mather

Elected to the committee were  
Gordon Edwards, Royston  
Smith and Jim White. Our  
sincere thanks to the retiring  
committee members: Ken  
Parsons (Chairman), Eric  
Simons and Peter Harvatt  
who have served the society  
well since its inception. Also  
at the meeting a donation of  
£10 was voted from the  
Society's funds for the Parish  
Hall Appeal Fund.

On Friday, 14th January we  
shall be holding our Annual  
Dinner at the Cross Scythes  
Hotel, time—7.30 for 8 p.m.  
Please book your places with  
Mr. Vernon Mather, 1 Green-  
wood Mount, High Street,  
Dore Tel. 360420) at the  
earliest opportunity, to assist  
the catering arrangements.

The ever-increasing problem  
of "Traffic in Towns" is the  
subject of a film to be shown  
by Messrs. Brook Shaw Ltd.  
on Friday, 28th January at  
8 p.m. in the Parish Hall.  
This film has received excell-  
ent recommendations.

### WHIST DRIVE

This is to be held in Totley  
Parish Hall on Friday, Jan.  
21st, 1966 at 7.30 p.m.

Tickets 2/-. Proceeds for  
Parish Hall Appeal Fund.  
Refreshment and Prizes.

### Church of England Children's Society

(Mrs. D. Simons)

The Society is now able to  
redeem Green Shield Savings  
Stamps and we use the  
money for Society funds. A  
complete book is usually  
worth 8/-, but to a recognised  
charity, such as the society,  
the value will be 11/-.

If you have any loose  
stamps, or books of stamps,  
and you would like them to  
be used for this purpose,  
please pass them to Mrs.  
Simons at 57 Sunnyvale Rd.  
who will send them to the  
society.

Everything for the  
Home Decorator

**H. J. PURDY**  
(London, City and Guilds)

88 BASLOW ROAD,  
TOTLEY RISE

'Phone 364836

Canadian Wallpapers and Murals  
40 Pattern Books of Crown, Sanderson  
and Continental Wallpapers  
Dulux, Brolac, Valspar, Pammastic  
Magicote, Duradio, Siscomat, Jellipex

**S. H. WESLEY & SON**

187 BASLOW ROAD

*Newsagent, Stationer  
and Tobacconist*

*Sweets and Chocolates*

Tel. 363883

Fancy Goods. Toys etc.  
Lyons Ice Cream  
Agent for Arthur Dixon, Royle,  
Hall Mark, and Continental  
Birthday Cards  
Every Popular make of Stationery  
in stock

Open until 1 p.m. on Sundays

### THE BABY BAR

57 BASLOW ROAD

Tel. 361059

*Specialists in Babies and  
Infants Wear*

Stockists of: Tick A Tee.  
Harrington. Kamella. Ladybird.  
Clydella. Bairnsweat. Shamrock.  
Ladies Hosiery: Ballito & Kayser

### S N O W I T E

*the laundry that does —*

**EXCELLENT**

**DRY CLEANING**

Telephone 50051

### JOHN BONNER

*Newsagent*

Rust Craft, Gordon Fraser  
and Noel Tatt Greeting Cards  
Holkham Hand-made Studio  
Pottery, Hornsea Pottery,  
Swedish Wood and Glassware,  
Hardware, Horticultural Sundries

15/19 BASLOW ROAD,

Totley Rise

National Health  
Prescription Dispensing

'Phone 3 6 1 0 7 0

### CHEMIST

**W. T. HUTCHINGS, M.P.S.**  
TOTLEY PHARMACY,

185 BASLOW ROAD, TOTLEY  
SHEFFIELD

**FRANK PRIEST**

253 BASLOW ROAD

Tel. 3 6 0 5 8 3

**Groceries and Provisions  
Fresh Fruit & Vegetables**

Our Speciality:  
Prime Grade 'A' Danish Bacon  
Delicious Fresh Boiled Ham  
Always a good selection  
of Cheese

**Orders Delivered**

**S. J. MAYNARD**

160 BASLOW ROAD

TOTLEY

Tel. 3 6 3 8 1 2

**Hardware Ironmongery**

**China Paints**

**Garden Requisites**

**R. ORME & CO. LTD.**

**Groceries & Provisions**

**Wines, Spirits & Beers**

at

TOTLEY

NETHER EDGE

BROOMHILL

and BAKEWELL

### John Heath & Sons

**The Leading Funeral  
Directors**

A reverent and helpful service  
which has continued through  
five generations

14 EARSHAM STREET,  
SHEFFIELD 4

Telephone 2 3 2 2 9

Enjoy the Social atmosphere at  
**ABBEYDALE HALL**

**The Totley and District  
Community Association**

Thursday, 7.30 p.m.  
Table Tennis, Old Time  
Dancing, Cyclists  
Thursday and Saturday, 7.30 p.m.  
Whist

New activities welcomed  
Call at the Hall or write to the  
Sec.: Mrs. E. M. Skinner,  
2 Laverdene Close, Totley

**LAURENCE TYM  
Family Butcher**

61 BASLOW RD, Totley Rise  
Tel. 360558

168 BASLOW RD, Green Oak  
Totley  
Tel. 361088

We Guarantee Satisfaction  
Orders Delivered in Your District  
Local Fed and Dressed,  
Beef, Pork, Lamb

**THE MARSTONE  
GARAGE LTD.**

(Official R.A.C. & A.A. Repairs)

Petrol, Oil and Paraffin  
Repairs and Service  
Tyres—New & Remoulded Service  
New and Used Cars  
V.I.P. Petrol and Oils

TOTLEY RISE, SHEFFIELD  
Telephone: 363328

Tel. 360997 (Totley Rise)  
360420 (Dore)

**COLIN THOMPSON  
& SON**

**Butchers and Farmers**  
(Established 1867)

TOTLEY RISE and DORE  
Orders Delivered

Home Fed Pork and Beef  
Prime Quality Lamb and Veal  
Home Made Potted Meat and  
Sausage, Poultry, Bacon & Eggs

Members of the National Federation  
of Fishmongers and the British  
Turkey Federation

**E. CHAMBERS & SON  
FISHMONGERS**

LICENSED GAME DEALERS  
TABLE POULTRY SPECIALISTS  
Established 1899

TOTLEY RISE & HEELEY  
GREEN, SHEFFIELD

Tel.: 360806; 50623; 364221

Telephone: Sheffield 3 6 0 7 7 4

**VICTOR WILKINSON  
& Sons**

PRACTICAL STEEPLE-JACKS  
BUILDING CONTRACTORS  
WORKS MAINTENANCE  
PROPERTY REPAIRS PLUMBING Etc.

1 MAIN AVENUE, TOTLEY

*WHEN IN SHEFFIELD VISIT...*

**Punch  
Stores**

**Castle Market**

*Specialists in  
Biscuits and Sweets*

CONTACT

**MEECO**

*for everything Electrical*

Works:

129 ST. MARY'S ROAD, SHEFFIELD 2

'Phone 7 8 3 2 7 / 8

Shop:

284 GLOSSOP ROAD, SHEFFIELD 10

'Phone 2 4 0 2 6

*Contractors for the new Parish Hall*

**GRINDROD  
HEATING**

—ALL SYSTEMS—  
—INDUSTRIAL and DOMESTIC—  
—BY ALL TYPES OF FIRING—

designed and installed by

**ALFRED GRINDROD & CO. LTD**  
122-134 CHARLES STREET · SHEFFIELD 1

TELEPHONE: 27591 (3 Lines)

Over 100 Wines and Spirits in  
Stock at

**BROADHEADS**

*your Mace Grocers*

Open 8.30 a.m. to 10.30 p.m.

**Orders Delivered**

158 BASLOW RD., TOTLEY

Tel. 360187

**ANGELA**

*Fashion Colour—Styling  
and a fantasy style for that  
special occasion*

86 BASLOW ROAD,  
TOTLEY

Telephone 3 6 3 4 0 9

We specialise in the smallest  
feature that makes your home  
different — to the major  
conversion

Consult . . .

**KENNETH LEE  
(Calver) LTD.**

COPPERFIELDS,  
CALVER,  
Via SHEFFIELD

Phone Grindleford 469  
and Sheffield 363409

**R. DAMMS**

**BOOT and SHOE REPAIRS**

63 BASLOW ROAD,  
Totley Rise, Sheffield

Your Comfort is OUR Concern

**F. E. BRAMALL**

**Dairyman**

Fresh Milk Delivered Daily  
Eggs and Farm Produce

HALL LANE FARM  
TOTLEY

Tel. 361589



# All Saints' News

FEBRUARY, 1966

Threepence

## Ashes and Action

ASH WEDNESDAY seems an odd name for the first day of Lent. Most of us no longer think of ashes as a sign of sorrow, but we should still make public our grief for the pain and evil that disfigures the world. I hope that all of you will find time to be in Church on Ash Wednesday, as your act of public sorrow.

There is much for us to be sorry about—racial tension and prejudice, whether in Rhodesia, Nigeria, Britain or the United States; the agony of the war in Vietnam; the hunger, illiteracy and poverty of millions of people throughout the world. As we acknowledge our collective sorrow for these things, we must also express our sorrow and penitence for the disunity of the Church and its consequent ineffectiveness in witnessing to the message of Jesus of Nazareth in our society. However clever we are in arranging words and theological formulas, true unity will depend on the realisation by each and every Christian of the pain of being separated from our brothers, whether Catholic, Orthodox or Protestant, and a real desire for reconciliation.

Disunity must not weaken our resolve to do all that we can, here and now, to show the world the truth that we know. In our private lives we have many opportunities, and only we ourselves know if we seize them or fail. The penitence we feel on Ash Wednesday must lead us to resolution and action; not merely to lament, but to determine to take the opportunities we have of building His kingdom; and to a sense of responsibility. This is the theme of our programme of study for Lent this year — "The Responsible Church".

## LENT 1966

### SUNDAYS

- 8.00 a.m. The Holy Communion
- 9.30 a.m. The Family Communion
- 2.30 p.m. Children's Church
- 6.30 p.m. Evening Prayer and Sermon

### First Sunday in month :

- 11.0 a.m. The Holy Communion
- At the 9.30 a.m. Services the Vicar will give a series of talks on the Revised Services.

### The preachers at the Evening Services will be—

- Feb. 27—The Revd. R. W. T. Moore—Rector of Newbold
- Mar. 6—The Vicar
- Mar. 13—The Revd. Michael Reardon—Secretary of the Sheffield Council of Churches
- Mar. 20—The Revd. Kingsley Rendell—Lecturer in the College of Education
- Mar. 27—The Revd. J. A. Norman—Diocesan Schools Organiser
- Apr. 3—The Revd. J. Gilpin—Hospital Chaplain

## A RESPONSIBLE CHURCH



### WEEKDAYS

- Feb. 23—Ash Wednesday
  - 6.30 a.m. Mattins, Litany and Communion, Holy Communion
  - 7.30 a.m. The Holy Communion
  - 9.30 a.m. The Holy Communion
  - 7.30 p.m. Compline
  - 8.00 p.m. Discussion "The Christian in Society"
- Discussion on Wednesday evenings will be based on the book "The Responsible Church", edited by Edwin Barker and published by S.P.C.K. at 5/6d, and will be held in the Parish Hall.

### During Lent the Holy Communion will be celebrated on—

- Monday 7.30 a.m.
- Tuesday 6.30 a.m.
- Wednesday 9.30 a.m.
- Thursday 7.30 a.m.
- Friday 7.30 a.m.

### EVENING MEETINGS

#### MARCH—

- 1—Tues. 7.30 p.m. "Mental Health Today". Meeting sponsored by the Ladies' Club
- 2—Wed. 7.30 p.m. Compline 8.00 p.m. The Revd. John Mack, "Problems of Unity"

- 8—Tues. 2.20 p.m. Mothers' Union "The work of the Marriage Guidance Council"

- 9—Wed. 7.30 p.m. Compline 8.00 p.m. "The Welfare Society", A Discussion

- 11—Fri. 8.00 p.m. Mr. W. D. Pugh C.B.E., "Automation, Labour and Leisure" Meeting sponsored by the Men's Society

- 15—Tues. 7.30 p.m. "Adoption" Meeting sponsored by the Ladies' Club

- 16—Wed. 7.30 p.m. Compline 8.00 p.m. "The Impact of Technology", A Discussion

- 23—Wed. 7.30 p.m. Compline 8.00 p.m. "Race Culture Nationalism", A Discussion

- 25—Fri. 8.00 p.m. Dr. David Morris "Alcohol and Road Safety" Meeting sponsored by the Men's Society

- 29—Tues. 7.30 p.m. "Thalidomide Children", Meeting sponsored by the Ladies' Club

- 30—Wed. 7.30 p.m. Compline 8.00 p.m. "Overseas Aid and Christian Responsibility" A Discussion

• With the compliments of

**VERNON HUDSON** DECORATOR AND PAINTING CONTRACTOR

241 Chesterfield Road, Dronfield, Tel. 2377.

Freshly Ground Coffee  
for all groceries, provisions,  
sweets, beer, wines, spirits and  
tobacco, etc.  
If you telephone 365038 and  
we us your order we will be  
pleased to deliver it to your  
home in one of our vans

### GRATTON'S

71 BASLOW ROAD,  
Totley Rise, Sheffield  
FULLY LICENSED

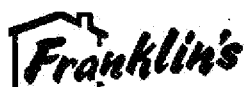
Branch: 251 BASLOW ROAD  
Tel. 3 6 1 3 5 9

IT IS SO EASY TO USE  
FRANKLIN'S CLEANING and  
RENOVATION SERVICES

'Phone 7 8 5 7 1

OR IMMEDIATE COLLECTION

4 Page Information and Price  
Guide Post Free



6 ECCLESALL ROAD

**A. E. PASHLEY**  
Family Butcher

249 BASLOW ROAD,  
(Main Avenue)

TOTLEY

'Phone 360634

Line Lamb, Beef, Pork & Poultry

Try our Speciality Sausages

Orders Delivered Daily

**BANNERDALE**  
**LAUNDRY**  
LTD.

For guaranteed satisfaction in  
Quality and Service

LITTLE LONDON ROAD,  
SHEFFIELD, 8

Phone 5 0 4 7 2 for particulars

If it's Wool, Nylon or Cotton,  
Knitted or Woven for Knitting  
or Sewing for all the Family . .

**I. WHITEHEAD**  
47 BASLOW ROAD  
Totley Rise

Tel. 362917

Everything for the home dress-  
maker including Belt & Button  
Service. Wide range of Gents  
Underwear, Shirts, Ties etc.

Good selection of Ladies  
Cardigans, Jumpers & Underwear

### WILLARS

49 BASLOW ROAD  
Totley Rise

'Phone 360390

For Men's, Ladies' and  
Childrens Footwear

Gluv, Tuf, Devonshire, Eagle &  
other makes in stock

High Class Footwear Repairs  
Wellingtons always in stock

**WILLIAM BURTON,**  
M.P.S.

Dispensing Chemist

'Phone 361181

45 BASLOW ROAD,  
Totley Rise

Toilet and Beauty Preparations  
including

Revlon

Coty

Max Factor

Yardley

Nat. Health Insurance Dispensing

**N. B. SHIPLEY**

164 BASLOW ROAD,

TOTLEY

Tel. 365178

KNITTING WOOL

NYLONS

GENERAL DRAPERY

**THE TOTLEY BRIDGE**  
**GARAGE LTD.**

MOTOR ENGINEERS

TOTLEY RISE

Mobil Petrol and Oils

Paraffin Smokeless Fuel

Standard Triumph Stockists

R.A.C. Agents—Recovery Service  
DAY (360376) NIGHT (361624)

Crypton Tuning

**TOTLEY FRUIT STORE**

166 BASLOW ROAD

Tel. 364073

Fresh Flowers, Fruit  
and Vegetables

Orders Delivered Daily

Floral Arrangements, Wedding  
Bouquets and Funeral Flowers  
our Speciality

### The Mothers' Union

(Mrs. P. Maynard)

Mrs. Kelham's Coffee  
Morning raised £9 for the  
Parish Hall Appeal. This was  
indeed a creditable effort, as  
it was held on a very snowy  
day. At our first meeting of  
1966, we had a lively and  
interesting discussion when  
members shared their views  
on the youth of today. On  
February 8th we are invited  
by Mrs. S. Pritchard, wife of  
the chaplain at Park Hill Flats  
to see the flats and the  
community life there. A  
coach is to leave the top of  
Main Avenue at 1.45 p.m.,  
and there will be several  
spare seats. Anyone who  
would like to go should  
contact Mrs. Kelham.

### Parish Hall Appeal Announcements

The following 'Fixture List'  
has been arranged by the  
Appeal Committee—

Whist Drive. Friday, Feb.  
18th, 7 p.m., Parish Hall.  
Tickets 2/-.

Shrove Tuesday Party. Feb.  
22nd, 7.30 p.m., Parish Hall.  
Tickets 3/6.

### School Caretaker

Mrs. Betty Stubbs has  
resigned as Caretaker and is  
taking another appointment  
away from the worries of  
looking after school buildings.  
During the past sixteen years  
she has earned high praise  
for the way she discharged  
her duties, and the high  
standards of cleanliness she  
maintained. We wish her  
every success in the future.

The School Managers have  
to appoint a full time care-  
taker for the new school and  
we hope soon to have news  
of the new appointment.

### Don't FORGET

February 20th is the day  
when Lent Boxes are avail-  
able in Church. We hope  
every family will take a box  
for its self-denial this Lent,  
and return them to Church  
on Low Sunday, so that we  
can send the money immedi-  
ately to the S.P.C.K. and  
C.M.S.

### SYM

EVERYBODY in the pa-  
Mrs. Adamson, whose ch-  
many friends during the 15  
bore her illness with great  
Adamson and Valerie are

We were sad to hear of t-  
before Christmas, and our  
his wife and family.

We remember also in ou-  
and his sister in their bere-  
much loved by all who kne-  
nature never left her durin-

### Mens' Society

(Keith Blackburn)

Our Annual Dinner last  
month could not fail to be  
anything other than a  
success, thanks to the appear-  
ance of those notorious star  
ballerinas Messrs. Edwards  
and George, together with  
their impressario 'Lucky Jim'  
White (who earns his name  
by virtue of having found 6d.  
in his helping of Christmas  
pudding!) Our thanks also  
to Mrs. Royston Smith for  
entertaining us with a song,  
and to our retiring Chairman  
Ken Parsons and others for  
their hard work behind the  
scenes.

Our programme for this  
month commences on Friday,  
11th February, when your  
Member of Parliament, Sir  
Peter Roberts, will speak to  
us. On February 25th we  
have another distinguished  
guest in the form of  
Sheffield's Transport Mana-  
ger, Mr. C. T. Humpidge, who  
will address us on the subject  
of 'The Historical Objection  
to the New Testament'.

### Magazine Distribution

There will be a meeting of  
magazine distributors at  
7.30 p.m. on Monday, Feb.  
14th, when we will discuss  
any problems that still exist  
in distribution and will be  
grateful to receive any  
comments that our readers  
have made about our new  
look magazine.

Mr. Cooke will be glad to  
receive any moneys that have  
been received. We are very  
grateful to the distributors  
for the excellent work they  
do in getting the newspaper  
out so promptly, and to the

## ATHY

ish mourns the death of  
rm and gaiety won her so  
years she lived here. She  
calm and courage, and Mr.  
very much in our prayers.  
the death of Mr. Abbott just  
deepest sympathy is with

prayers Mr. Arthur Birley  
avement. Mrs. Birley was  
her, and her gentle good-  
her long illness.

readers who pay for the  
year's issues in advance  
making the job of collection  
so much easier.

## Confirmation

We give advance notice, to  
to those who are considering  
Confirmation, that the next  
Service of Confirmation at  
Totley will be on December  
4th. The Vicar will start  
confirmation classes for  
juniors during Lent on Sunday  
afternoons at 2.30, and if  
there are any adults who are  
thinking of confirmation, the  
Vicar will be grateful if they  
will let him know.

## Carollers and Christmas

A big "Thank You" to all  
who carolled so successfully  
for the Children's Society this  
Christmas. The Men's Society  
raised over £23, and we must  
not forget the young people  
who were also "at it". As a  
result of Advent Purses, the  
School Nativity Play and  
Carols, we shall be sending  
£58 to the Children's Society  
this year. We also thank Mr.  
Pearson for the gift of the  
Christmas Tree.

## Parish Meeting

We hope you have not  
forgotten that everybody  
should be coming to the  
Annual Parish Meeting to be  
held in the Parish Hall at  
7.30 p.m. on February 16th,  
when we shall elect the  
Wardens and Church Council  
for the New Year; receive the  
audited accounts, and report  
on the work of the parish in  
1965.

There will also be an  
opportunity at this meeting  
for anyone who is on the  
Church electoral roll to ask  
any questions they wish about  
the work of the church both  
inside outside the parish.

## Altar Flowers

Feb. 6—Mrs. Tinsdeall,  
Vernon Road.

Feb. 13—Mrs. Kirkman,  
Dore.

Feb. 20—Mrs. Johnson,  
The Grove.

No altar flowers are required  
in Lent.

## Parish Register

### Baptisms

Jan. 16—Colin Graham  
Marries.

Jan. 23—Jane Elizabeth  
Allen.

Jan. 30—David Graham  
Fisher.

## In Memoriam

On Tuesday, January 11th,  
the parishioners of All Saints'  
were saddened by the news  
that Chèrine Adamson had  
ended the gallant fight which  
began in November of last  
year, when she was taken to  
the Jessop Hospital.

In the words of the Bishop  
of Pontefract "She faced with  
faith, and a serene courage"  
the knowledge that her time  
was to be short. These  
qualities had already been  
seen in her fifteen year's  
capable and loyal Chairman-  
ship of our Working Party,  
and her association with the  
Ladies' Club. To the end she  
never lost her thoughts for  
her family and friends. Her  
attractive personality and  
cheerful disposition endeared  
her to everybody; all her  
work for the Parish was done  
without fuss, but with the  
same quiet efficiency with  
which she ran her home.

To Mr. Adamson, who has  
helped to console so many  
people in this parish, we offer  
our love and sympathy. Our  
hearts go out to him and to  
Valerie, on whose birthday,  
by sad coincidence, her  
mother died. To the parish-  
ioners of All Saints' Totley  
who knew and loved her, she  
will ever be a gracious  
memory. Mrs. C. Stansfield.

Everything for the  
Home Decorator

**H. J. PURDY**  
(London, City and Guilds)

88 BASLOW ROAD,  
TOTLEY RISE

'Phone 364836

Canadian Wallpapers and Murals  
40 Pattern Books of Crown, Sanderson  
and Continental Wallpapers  
Dulux, Brolac, Valspar, Pammastic  
Magicote, Duradio, Siscomatte, Jellipex

## S. H. WESLEY & SON

187 BASLOW ROAD

Newsagent, Stationer  
and Tobacconist

Sweets and Chocolates  
Tel. 363883

Fancy Goods. Toys etc.

Lyons Ice Cream

Agent for Arthur Dixon, Royle,  
Hall Mark, and Continental  
Birthday Cards

Every Popular make of Stationery  
in stock

Open until 1 p.m. on Sundays

## THE BABY BAR

57 BASLOW ROAD

Tel. 361059

Specialists in Babies and  
Infants Wear

Stockists of: Tick A Tee.

Harrington. Kamella. Ladybird.

Clydella. Bairnsweat. Shamrock.

Ladies Hosiery: Ballito & Kayser

## SNOWITE

the laundry that does —

EXCELLENT

DRY CLEANING

Telephone 50051

## JOHN BONNER

Newsagent

Rust Craft, Gordon Fraser  
and Noel Tatt Greeting Cards

Holkham Hand-made Studio

Pottery, Hornsea Pottery,

Swedish Wood and Glassware,  
Hardware, Horticultural Sundries

15/19 BASLOW ROAD,

Totley Rise

National Health  
Prescription Dispensing

'Phone 361070

## CHEMIST

W. T. HUTCHINGS, M.P.S.

TOTLEY PHARMACY,

185 BASLOW ROAD, TOTLEY  
SHEFFIELD

## FRANK PRIEST

253 BASLOW ROAD

Tel. 360583

Groceries and Provisions  
Fresh Fruit & Vegetables

Our Speciality:  
Prime Grade 'A' Danish Bacon  
Delicious Fresh Boiled Ham  
Always a good selection  
of Cheese

Orders Delivered

## S. J. MAYNARD

160 BASLOW ROAD

TOTLEY

Tel. 363812

Hardware Ironmongery

China Paints

Garden Requisites

## R. ORME & CO. LTD.

Groceries & Provisions

Wines, Spirits & Beers

at

TOTLEY

NETHER EDGE

BROOMHILL

and BAKEWELL

## John Heath & Son

The Leading Funeral  
Directors

A reverent and helpful service  
which has continued through  
five generations

14 EARSHAM STREET,

SHEFFIELD 4

Telephone 23229



Enjoy the Social atmosphere at  
**ABBEYDALE HALL**

**The Totley and District  
Community Association**

Thursday, 7.30 p.m.  
Table Tennis, Old Time  
Dancing, Cyclists  
Thursday and Saturday, 7.30 p.m.  
Whist

New activities welcomed  
Call at the Hall or write to the  
Sec.: Mrs. E. M. Skinner,  
2 Laverdene Close, Totley

**LAURENCE TYM  
Family Butcher**

61 BASLOW RD. Totley Rise  
Tel. 360558

168 BASLOW RD. Green Oak  
Totley  
Tel. 361088

We Guarantee Satisfaction  
Orders Delivered in Your District  
Local Fed and Dressed,  
Beef, Pork, Lamb

**THE MARSTONE  
GARAGE LTD.**

(Official R.A.C. & A.A. Repairs)

Petrol, Oil and Paraffin  
Repairs and Service  
Tyres—New & Remoulded Service  
New and Used Cars  
V.I.P. Petrol and Oils

TOTLEY RISE, SHEFFIELD  
Telephone: 363328

Tel. 360997 (Totley Rise)  
360420 (Dore)

**COLIN THOMPSON  
& SON**

Butchers and Farmers  
(Established 1867)

TOTLEY RISE and DORE  
Orders Delivered

Home Fed Pork and Beef  
Prime Quality Lamb and Veal  
Home Made Potted Meat and  
Sausage, Poultry, Bacon & Eggs

Members of the National Federation  
of Fishmongers and the British  
Turkey Federation

**E. CHAMBERS & SON  
FISHMONGERS**

LICENSED GAME DEALERS  
TABLE POULTRY SPECIALISTS  
Established 1899

TOTLEY RISE & HEELEY  
GREEN, SHEFFIELD

Tel.: 360806; 50623; 364221

Telephone: Sheffield 3 6 0 7 7 4

**VICTOR WILKINSON  
& Sons**

PRACTICAL STEEPLE-JACKS  
BUILDING CONTRACTORS  
WORKS MAINTENANCE  
PROPERTY REPAIRS FLUMING Etc.

1 MAIN AVENUE, TOTLEY

**WHEN IN SHEFFIELD VISIT . . .**

**Punch  
Stores**  
**Castle Market**

*Specialists in  
Biscuits and Sweets*

CONTACT

**MEECO**

*for everything Electrical*

Works:

129 ST. MARY'S ROAD, SHEFFIELD 2

'Phone 7 8 3 2 7 / 8

Shop:

284 GLOSSOP ROAD, SHEFFIELD 10

'Phone 2 4 0 2 6

*Contractors for the new Parish Hall*

**GRINDROD  
HEATING**

—ALL SYSTEMS—  
—INDUSTRIAL and DOMESTIC—  
—BY ALL TYPES OF FIRING—

designed and installed by

**ALFRED GRINDROD & CO. LTD**  
**122-134 CHARLES STREET · SHEFFIELD 1**

TELEPHONE: 27591 (3 Lines)

Over 100 Wines and Spirits in  
Stock at

**BROADHEADS**

*your Mace Grocers*

Open 8.30 a.m. to 10.30 p.m.

Orders Delivered

158 BASLOW RD., TOTLEY

Tel. 360187

**ANGELA**

*Fashion Colour—Styling  
and a fantasy style for that  
special occasion*

86 BASLOW ROAD,  
TOTLEY

Telephone 3 6 3 4 0 9

We specialise in the smallest  
feature that makes your home  
different — to the major  
conversion

Consult . . .

**KENNETH LEE  
(Calver) LTD.**

COPPERFIELDS,  
CALVER,  
Via SHEFFIELD

Phone Grindleford 469  
and Sheffield 363409

**R. DAMMS**

BOOT and SHOE REPAIRS

63 BASLOW ROAD,  
Totley Rise, Sheffield

Your Comfort is OUR Concern

**F. E. BRAMALL**  
**Dairyman**

Fresh Milk Delivered Daily  
Eggs and Farm Produce

HALL LANE FARM  
TOTLEY

Tel. 361589



# All Saints' News

APRIL, 1966

Threepence

**The Vicar writes :-**

## FALSE SPRING?

Everybody knows that I am not a gardener, but living in a parish like ours, on the edge of such a lovely countryside, even the Vicar is aware of the wonder of Spring, though this year it seemed to come too early and was almost a false Spring, as we have been reminded by the weather of the past few days.

The cycle of death and rebirth that we see in nature is similar to that which we see in human institutions, particularly in the Church. There are times of darkness, when the Church seems ineffective and inarticulate, but even when we are most dismayed we take consolation from the glowing piety of the individuals who are the saints of the Church in each generation.

Now it seems that the Church is responding to the warmth of God's love, which we call the doctrine of the Holy Spirit, and all around we can see resurgence and rebirth—the excitement of the ecumenical encounter; the reunion of the Church in South India; the conversations with the Methodist Church in this country; and now, the dialogue with the Roman Catholic Church and Presbyterian Church. Even if it is a false Spring, and there is no apparent harvest of unity to be reaped, one knows with certainty that the day will come when the Church—reborn, renewed—will be one, as our Lord prayed that it would be.

I hope that, on Easter Day, each one of you will pray that the resurrection of our Lord may be seen in the visible coming together of the parts of His divided Body.

## Easter Services

- 7.00 a.m. The Holy Communion
- 8.00 a.m. The Holy Communion
- 9.30 a.m. The Family Communion
- 11.0 a.m. The Holy Communion
- 2.30 p.m. Children's Service
- 6.30 p.m. Evening Prayer, Sermon and Procession



## Infants and More Infants

On January 2nd, 1877, the "new" school was opened at Totley. The teacher was Miss Yates, who is still remembered in the parish, and Mrs. Holding, one of our "oldest" old pupils, has some delightful memories of the school, with benches running the length of the big classroom (now the new library classroom). On July 6th of that year, a Government inspection took place and in the report was written "This is a new school, or rather an old school established on an improved footing, for the hamlet of Totley in the parish of Dore . . . Very fair attendance of scholars, in fact more than one teacher can well manage, considering how various their ages are".

### MORE INFANTS

The inspector came again a year later, on July 4th, and wrote "The school is much improved since my last visit, and if the number of infants continues to increase other arrangements must be made for their instruction". The number did continue to increase, and in 1889 a new classroom was built. The headmistress wrote on

March 12th "The new department was finished on Wednesday; standards 1 and 2 were taken into it, and the infants brought from the upper room.

### AND MORE INFANTS

In 1891 the inspector could write that the children were well-behaved but that in the  
(cont. page 2)

With the compliments of

**VERNON HUDSON** DECORATOR AND PAINTING CONTRACTOR

241 Chesterfield Road, Dronfield, Tel. 2377.

For Freshly Ground Coffee  
For all groceries, provisions,  
sweets, beer, wines, spirits and  
tobacco, etc.  
If you telephone 365038 and  
give us your order we will be  
pleased to deliver it to your  
home in one of our vans

**GRATTON'S**  
71 BASLOW ROAD,  
Totley Rise, Sheffield  
FULLY LICENSED  
Branch: 251 BASLOW ROAD  
Tel. 3 6 1 3 5 9

IT IS SO EASY TO USE  
**FRANKLIN'S CLEANING and  
RENOVATION SERVICES**

'Phone 7 8 5 7 1  
FOR IMMEDIATE COLLECTION  
24 Page Information and Price  
Guide Post Free



6 ECCLESALL ROAD

**A. E. PASHLEY**  
Family Butcher

249 BASLOW ROAD,  
(Main Avenue)  
TOTLEY  
'Phone 360634

Fine Lamb, Beef, Pork & Poultry  
Try our Speciality Sausages  
Orders Delivered Daily

**BANNERDALE  
LAUNDRY  
LTD.**

For guaranteed satisfaction in  
Quality and Service

LITTLE LONDON ROAD,  
SHEFFIELD, 8

'Phone 50472 for particulars

If it's Wool, Nylon or Cotton,  
Knitted or Woven for Knitting  
or Sewing for all the Family . .

**I. WHITEHEAD**  
47 BASLOW ROAD  
Totley Rise  
Tel. 362917

Everything for the home dress-  
maker including Belt & Button  
Service. Wide range of Gents  
Underwear, Shirts, Ties etc.

Good selection of Ladies  
Cardigans, Jumpers & Underwear

## WILLARS

49 BASLOW ROAD  
Totley Rise  
'Phone 360390

For Men's, Ladies' and  
Childrens Footwear

Gluver, Tuf, Devonshire, Eagle &  
other makes in stock

High Class Footwear Repairs  
Wellingtons always in stock

**WILLIAM BURTON,**  
M.P.S.

Dispensing Chemist  
'Phone 361181

45 BASLOW ROAD,  
Totley Rise

Toilet and Beauty Preparations  
including

Revlon  
Coty  
Max Factor  
Yardley  
Nat. Health Insurance Dispensing

**N. B. SHIPLEY**

164 BASLOW ROAD,  
TOTLEY  
Tel. 365178

KNITTING WOOL  
NYLONS

GENERAL DRAPERY

**THE TOTLEY BRIDGE  
GARAGE LTD.**

MOTOR ENGINEERS  
TOTLEY RISE

Mobil Petrol and Oils  
Paraffin Smokeless Fuel  
Standard Triumph Stockists

R.A.C. Agents—Recovery Service  
DAY (360376) NIGHT (361624)  
Crypton Tuning

**TOTLEY FRUIT STORE**

166 BASLOW ROAD  
Tel. 364073

Fresh Flowers, Fruit  
and Vegetables

Orders Delivered Daily

Floral Arrangements, Wedding  
Bouquets and Funeral Flowers  
our Speciality

And More Infants (continued from page 1)

lower part of the school  
restless habits should be  
habitually checked, and he  
was concerned about the  
great influx of infants in the  
Autumn of last year; this  
coincided with the building of  
the Totley railway tunnel,  
when an encampment of  
migrant labourers and their  
families was set up on what  
we now know as Totley  
Bents Cricket Field. The  
Managers must have been  
greatly encouraged when in  
1892 a generous gift of £575  
was made to the school—the  
Biggin Benefaction, to help  
them keep pace with expand-  
ing Totley.

## STILL MORE AND MORE

In 1898 the inspectors  
wanted to know why an  
infants classroom had not  
been provided as there were  
73 infants in the school, but  
by 1899 they said in their  
report that a new classroom  
and cloakroom were welcome  
additions to the premises. In  
1904 the school was still  
expanding, and there was  
accommodation for 120  
children in the large room,  
46 in the classroom and 76 in  
the infants room.

The inevitable result of  
nearly a 100 years of Christian  
education was a demand for  
Totley to have its own  
Church.

## AND NOW THE CHURCH

At a Managers' Meeting on  
December 15th, 1919, held at  
Totley Hall, Mr. Milner  
moved that the Managers  
should consult the Vicar and  
Mr. Foulstone about having  
the schoolroom licensed for  
the celebration of Holy Com-  
munion. The worship in  
school flourished, and in 1924  
the parishioners of Totley  
were able to erect their own  
church building.

## CANON O'NEIL

As we look back through  
the Manager's records and  
the log books for the first 50  
years of this century, one  
cannot fail to be moved by—  
The dedication of the

teachers, often badly paid  
and working in difficult  
circumstances, and the deter-  
mination of the managers and  
people of the poor hamlet of  
Totley to do all they could  
to improve their school, and  
their children's opportunities  
for education.

The passing of the Educa-  
tion Act in 1944 brought its  
own problems. Was the  
tradition of Christian educa-  
tion in the parish to be  
continued? With great en-  
couragement the Managers and  
the Church Council decided  
that it should, and the deli-  
verance that the parish owes to  
Canon O'Neill, who fought to  
preserve Church Schools in  
the Diocese of Derby, must  
be clearly stated. The Local  
Education Authority decided  
to provide a County Primary  
School in the parish, and the  
weathered stone of a school  
75 years old, which had with-  
stood the battering of 75  
years' use by many genera-  
tions of Totley children, now  
looked a very "poor relative"  
indeed! But the school was  
worth preserving, because  
now once again we can  
pioneer new standards of  
education, not only for  
Totley, but also for the County  
Borough of Sheffield.

When, on May 20th, St.  
Herbert Andrew opens the  
school, we—as a parish—can  
at least say that we have  
handed on to the next genera-  
tion the great tradition of  
care and concern for educa-  
tion that we inherited from  
our founders.

## Parish Roundabout Church Council

At a meeting on March 3rd  
the Church Council re-elected  
Mr. Raymond Gale as  
Secretary and Mr. A. J.  
Stacey as Treasurer. Mr.  
Stansfield and Dr. Keith  
Blackburn were elected as  
representatives on the  
Sheffield Council of Churches.

## Lent Boxes - A Reminder

Please return your Lenten  
self-denial box to the church  
on the first Sunday after  
Easter—April 17th.

## Parish Roundabout . . .

### Sungei Buloh

Two prayers from the Sunday School children—  
 "Dear Father, who loves all people everywhere, please look after Ann Richens while she works in Sungei Buloh".  
 "O Lord, watch over Ann Richens on her way to Malaya. Help her to look after the sick. Give her strength to do all that is good for mankind. Amen".

### Mens' Society

(Keith Blackburn)

Our first meeting is on Wednesday, April 6th when we attend the service of Compline for Holy Week at 7.30 p.m. After the Vicar's address, we shall be giving the Church its annual Spring Clean in the less accessible quarters in preparation for the ladies' efforts later in the week; so if you are prepared to help, please come in old clothes.

Back to our normal Friday evenings, we have another industrial expert in Mr. T. Winslow who will be answering the question "Work; why so much?". This meeting is at 8 p.m. on Friday, 22nd April and we shall welcome your support for our guest speaker.

### The Ladies' Club

On Tuesday, April 19th, we have our annual plant auction, so do bring your contribution ladies, and a bag to take home your purchases!

A representative of the Midland Bank is coming on Tuesday, May 3rd to tell us about all the services the bank can offer to us.

### Guides and Brownies

(Mrs. K. Bridges)

We are pleased that Elizabeth Rollin and Catherine Palmer have passed their Golden Hand test and in addition Catherine passed her test for a Swimmer's Badge.

We have three more recruits and it is very encouraging to see our Pack getting stronger.

### The Ladies' Working Party

(Mrs. M. E. Powell)

Our members are once

again busily engaged in preparing and collecting items for those Stalls for which they are responsible, for the Garden Party.

The next Ladies' Working Party Meeting will be held on April 26th in the Parish Hall at 2.15 p.m., when we will welcome any ladies in the parish, who wish to join in our activities.

### The Drama Group

The next presentation of the group is "Beside the Seaside". This comedy will be presented in the Parish Hall on May 11th, 12th, 13th and 14th. Tickets: Adults 3/-. Children 1/6. Old Age Pensioners will be welcomed at the reduced charge of 1/6 on the 11th and 12th.

### Parish Hall Appeal Fund

WHIST DRIVE, Friday, April 15th, 1966, 7.30 p.m. in Totley Parish Hall. Refreshments. Tickets 2/-.

CHEESE & WINE PARTY, Friday, April 29th, 8 p.m. in Totley Parish Hall. Refreshments. Tickets 5/6. By ticket only.

Mrs. Harvatt's Coffee Morning raised £15 for the Parish Hall Appeal.

### Altar Flowers

Apr. 10—Easter Sunday Ladies' Working Party.  
 Apr. 17—Mrs. Morgan and Mrs. Harvatt.  
 Apr. 24—Mrs. Tym, Sunnyvale Road.

### Parish Registers

#### BAPTISMS

Feb. 27—Robert Orton.  
 Mar. 13—Gavin William Ockenden.  
 Mar. 27—Samantha Leigh Smith.

#### WEDDINGS

Feb. 5—Ivor Roy Rawlings and Josephine Mary Benton.  
 Mar. 7—John Peter Plumtree and Pamela Molly Jackson.  
 Mar. 17—Keith Bailey and Carol Enid Taylor.  
 Mar. 19—Derek Lamb and Elizabeth Shone.

Everything for the Home Decorator

**H. J. PURDY**  
 (London, City and Guilds)

88 BASLOW ROAD,  
 TOTLEY RISE

'Phone 364836

Canadian Wallpapers and Murals  
 40 Pattern Books of Crown, Sanderson and Continental Wallpapers  
 Dulux, Brolac, Valspar, Pamplastic, Magicote, Duradio, Siscomatte, Jellipex

**S. H. WESLEY & SON**  
 187 BASLOW ROAD  
 Newsagent, Stationer and Tobacconist  
 Sweets and Chocolates  
 Tel. 363883

Fancy Goods. Toys etc.  
 Lyons Ice Cream  
 Agent for Arthur Dixon, Royle, Hall Mark, and Continental  
 Birthday Cards  
 Every Popular make of Stationery in stock  
 Open until 1 p.m. on Sundays

**THE BABY BAR**  
 57 BASLOW ROAD

Tel. 361059

Specialists in Babies and Infants Wear

Stockists of: Tick A Tee.  
 Harrington. Kamella. Ladybird.  
 Clydella. Bairnsware. Shamrock.  
 Ladies Hosiery: Ballito & Kayser

### SNOWITE

the laundry that does —  
 EXCELLENT

DRY CLEANING

Telephone 50051

**JOHN BONNER**  
 Newsagent

Rust Craft, Gordon Fraser and Noel Tatt Greeting Cards  
 Holkham Hand-made Studio Pottery, Hornsea Pottery, Swedish Wood and Glassware, Hardware, Horticultural Sundries  
 15/19 BASLOW ROAD,  
 Totley Rise

National Health Prescription Dispensing

'Phone 361070

## CHEMIST

**W. T. HUTCHINGS, M.P.S.**  
 TOTLEY PHARMACY,

185 BASLOW ROAD, TOTLEY  
 SHEFFIELD

**FRANK PRIEST**  
 253 BASLOW ROAD  
 Tel. 360583

Groceries and Provision  
 Fresh Fruit & Vegetable

Our Speciality:  
 Prime Grade 'A' Danish Bacon  
 Delicious Fresh Boiled Ham  
 Always a good selection of Cheese  
 Orders Delivered

**S. J. MAYNARD**  
 160 BASLOW ROAD  
 TOTLEY

Tel. 363812

Hardware Ironmongery  
 China Paints  
 Garden Requisites

**R. ORME & CO. LTD.**  
 Groceries & Provisions  
 Wines, Spirits & Beers

at

TOTLEY  
 NETHER EDGE  
 BROOMHILL  
 and BAKEWELL

**John Heath & Son**

The Leading Funeral Directors

A reverent and helpful service which has continued through five generations

14 EARSHAM STREET,  
 SHEFFIELD 4

Telephone 23229

Enjoy the Social atmosphere at  
**ABBEYDALE HALL**

**The Totley and District  
Community Association**

Thursday, 7.30 p.m.  
Table Tennis, Old Time  
Dancing, Cyclists  
Thursday and Saturday, 7.30 p.m.  
Whist

New activities welcomed  
Call at the Hall or write to the  
Sec.: Mrs. E. M. Skinner,  
2 Laverdene Close, Totley

**LAURENCE TYM**

**Family Butcher**

61 BASLOW RD. Totley Rise  
Tel. 360558

168 BASLOW RD. Green Oak  
Totley  
Tel. 361088

We Guarantee Satisfaction  
Orders Delivered in Your District  
Local Fed and Dressed,  
Beef, Pork, Lamb

**THE MARSTONE**

**GARAGE LTD.**

(Official R.A.C. & A.A. Repairs)

Petrol, Oil and Paraffin  
Repairs and Service  
Tyres—New & Remoulded Service  
New and Used Cars  
V.I.P. Petrol and Oils

TOTLEY RISE, SHEFFIELD  
Telephone: 363328

Tel. 360997 (Totley Rise)  
360420 (Dore)

**COLIN THOMPSON  
& SON**

**Butchers and Farmers**  
(Established 1867)

TOTLEY RISE and DORE  
**Orders Delivered**

Home Fed Pork and Beef  
Prime Quality Lamb and Veal  
Home Made Potted Meat and  
Sausage. Poultry, Bacon & Eggs

Members of the National Federation  
of Fishmongers and the British  
Turkey Federation

**E. CHAMBERS & SON**  
**FISHMONGERS**

**LICENSED GAME DEALERS**  
**TABLE POULTRY SPECIALISTS**  
Established 1899

TOTLEY RISE & HEELEY  
GREEN, SHEFFIELD  
Tel.: 360806; 50623; 364221

Telephone: Sheffield 3 6 0 7 7 4

**VICTOR WILKINSON  
& Sons**

PRACTICAL STEEPLE-JACKS  
BUILDING CONTRACTORS  
WORKS MAINTENANCE  
PROPERTY REPAIRS FLUMMING Etc.

1 MAIN AVENUE, TOTLEY

**WHEN IN SHEFFIELD VISIT . . .**

**Punch  
Stores**

**Castle Market**

*Specialists in  
Biscuits and Sweets*

CONTACT

**MEECO**

*for everything Electrical*

Works:

129 ST. MARY'S ROAD, SHEFFIELD 2

'Phone 7 8 3 2 7 / 8

Shop:

284 GLOSSOP ROAD, SHEFFIELD 10

'Phone 2 4 0 2 6

*Contractors for the new Parish Hall*

**GRINDROD  
HEATING**

—ALL SYSTEMS—  
—INDUSTRIAL and DOMESTIC—  
—BY ALL TYPES OF FIRING—

designed and installed by

**ALFRED GRINDROD & CO. LTD**  
**122-134 CHARLES STREET · SHEFFIELD 1**

TELEPHONE: 27591 (3 Lines)

Over 100 Wines and Spirits in  
Stock at

**BROADHEADS**

*your Mace Grocers*

Open 8.30 a.m. to 10.30 p.m.

**Orders Delivered**

158 BASLOW RD., TOTLEY

Tel. 360187

**ANGELA**

*Fashion Colour—Styling  
and a fantasy style for that  
special occasion*

86 BASLOW ROAD,  
TOTLEY

Telephone 3 6 3 4 0 9

We specialise in the smallest  
feature that makes your home  
different — to the major  
conversion

Consult . . .

**KENNETH LEE**

**(Calver) LTD.**

**COPPERFIELDS,  
CALVER,**

Via SHEFFIELD

Phone Grindleford 469  
and Sheffield 363409

**R. DAMMS**

**BOOT and SHOE REPAIRS**

63 BASLOW ROAD,  
Totley Rise, Sheffield

Your Comfort is OUR Concern

**F. E. BRAMALL**

**Dairyman**

Fresh Milk Delivered Daily  
Eggs and Farm Produce

HALL LANE FARM  
TOTLEY

Tel. 361589



# All Saints' News

MAY, 1966

Threepence

The Vicar writes:-

## HALL MARKS

There are many ways in which we can recognise the Church as being the Church as our Lord intended it to be; some of them are theoretical or theological, other practical. One of the practical hall marks of the Church is the way in which it responds to our Lord's command to let the children come to Him, because children are the most innocent and helpless of our "neighbours".

### THE FAMILY COMMUNION

This is why, at 9.30 on Sunday mornings, we have a Family Communion, when many people who have young children are able to bring them to church so that they can begin to understand the mystery, excitement and happiness of meeting our Lord in the sacrament of the Holy Communion. Sometimes, I know, children can be noisy in church, but it is the noise of innocence. The hall mark of true Christianity would be very very faint indeed if, by our actions or words, we were to prevent parents from bringing their children with them when they make their communion. The Church that truly acknowledges Christ as its King will remember the way He rebuked His disciples when they thought that children should not be brought to Him.

The concern of the Church for the welfare of its children is marked throughout its history, and we should be very conscious of this lesson which the founders of our School taught us when, on May 20th, the Bishop dedicates our new buildings, which will be opened by Sir Herbert Andrew.

The continuing commitment of the Church to the work of education is a source of some irritation to certain non-Christian people. They feel that when the State subsidises the building of Church Schools and their maintenance they are subsidising propaganda machines. They would like to see all our children educated in State Schools, all choice

being taken away and—presumably—our schools nationalised. The Church should not be ashamed to defend its schools and colleges; they are a visible sign to both the Christian heritage of our civilisation in the past and the values which must be preserved if it is to survive into the future.

### CHRIST CENTRED

The new School of All Saints is unashamedly Christ-centred, not just in the sense that there is a morning act of worship and compliance with statutory instruction in the agreed syllabus; Christianity spills over — pervades, envelopes the teaching of every subject and in the love which the teachers show

for the children in their care.

### FREEDOM OF CHOICE

In our society a great debate is taking place about the whole character and concept of education, and it is of benefit that there is a duality in the provision of schools. When there is no certain answer to what is the best way of educating our children, the independence of Church Schools guarantees that there will be no imposition of one answer.

I hope that all of you will take an opportunity of visiting the new school in the Open Week

May 23rd — 26th, and see for yourselves the fine buildings and equipment our children now enjoy.

The school will be open to visitors—

Saturday, May 21st  
10—12 noon.  
2—4 p.m.

Monday, 23rd May  
2—4 p.m.  
7—9 p.m.

Tuesday, 24th May  
2—4 p.m.  
7—9 p.m.

Wednesday, 25th May  
2—4 p.m.  
7—9 p.m.

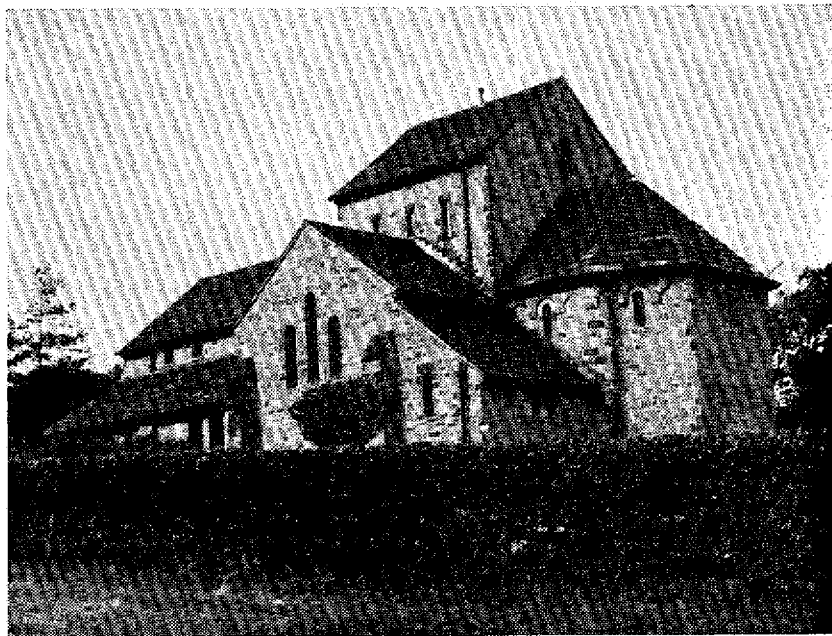
Thursday, 26th May  
2—4 p.m.  
7—9 p.m.

### ASCENSION DAY (Thursday, 19th May)

7.00 a.m. The Holy Communion  
8.45 a.m. Children's Service  
9.30 a.m. The Holy Communion  
8.00 p.m. The Holy Communion

### WHIT SUNDAY (29th May)

8.00 a.m. The Holy Communion  
9.30 a.m. The Family Communion  
11.00 a.m. The Holy Communion  
2.30 p.m. Children's Service  
6.30 p.m. Evening Prayer and Sermon



With the compliments of

**VERNON HUDSON** DECORATOR AND PAINTING CONTRACTOR

241 Chesterfield Road, Dronfield, Tel. 2377.

**Freshly Ground Coffee**  
all groceries, provisions,  
beers, wines, spirits and  
etc.

Telephone 365038 and  
your order we will be  
delivered to your  
in one of our vans

**GRATTON'S**  
21 BASLOW ROAD,  
Totley Rise, Sheffield  
FULLY LICENSED  
251 BASLOW ROAD  
Tel. 3 6 1 3 5 9

IT IS SO EASY TO USE  
FRANKLIN'S CLEANING and  
RENOVATION SERVICES

Phone 7 8 5 7 1  
IMMEDIATE COLLECTION  
Page Information and Price  
Guide Post Free



ECCLESALL ROAD

**A. E. PASHLEY**  
Family Butcher

249 BASLOW ROAD,  
(Main Avenue)  
TOTLEY  
Phone 360634

Lamb, Beef, Pork & Poultry  
Try our Speciality Sausages  
Orders Delivered Daily

**BANNERDALE**  
LAUNDRY  
LTD.

guaranteed satisfaction in  
Quality and Service

ITTLE LONDON ROAD,  
SHEFFIELD, 8

Phone 5 0 4 7 2 for particulars

it's Wool, Nylon or Cotton,  
knitted or Woven for Knitting  
Sewing for all the Family . .

**I. WHITEHEAD**  
47 BASLOW ROAD  
Totley Rise  
Tel. 362917

everything for the home dress-  
maker including Belt & Button  
service. Wide range of Gents  
Underwear, Shirts, Ties etc.  
Good selection of Ladies  
dresses, Jumpers & Underwear

## WILLARS

49 BASLOW ROAD  
Totley Rise  
Phone 360390

For Men's, Ladies' and  
Childrens Footwear

Glue, Tuf, Devonshire, Eagle &  
other makes in stock

High Class Footwear Repairs  
Wellingtons always in stock

**WILLIAM BURTON,**  
M.P.S.

Dispensing Chemist

Phone 361181

45 BASLOW ROAD,  
Totley Rise

Toilet and Beauty Preparations  
including

Revlon

Coty

Max Factor

Yardley

Nat. Health Insurance Dispensing

**N. B. SHIPLEY**

164 BASLOW ROAD,  
TOTLEY  
Tel. 365178

KNITTING WOOL

NYLONS

GENERAL DRAPERY

**THE TOTLEY BRIDGE**  
GARAGE LTD.

MOTOR ENGINEERS

TOTLEY RISE

Mobil Petrol and Oils

Paraffin Smokeless Fuel

Standard Triumph Stockists

R.A.C. Agents—Recovery Service  
DAY (360376) NIGHT (361624)

Crypton Tuning

**TOTLEY FRUIT STORE**

166 BASLOW ROAD

Tel. 364073

Fresh Flowers, Fruit  
and Vegetables

Orders Delivered Daily

Floral Arrangements, Wedding  
Bouquets and Funeral Flowers  
our Speciality

## LENT BOXES

If you have not returned  
your Lent Box will you  
please do so soon as possible,  
so that we may send the  
money to S.P.C.K. and C.M.S.

## CARETAKER

We have a new Caretaker  
of our Church School  
Mr. Robert Glew, of 77 Aldam  
Road, who will also act as  
Caretaker for the Church and  
Parish Hall. We welcome  
both him and his wife to the  
parish, and hope that they  
will be very happy with us.

We thank Mrs. Vaughan  
and Mrs. Fisher for the  
excellent way in which they  
have looked after our build-  
ings until it was possible for  
us to appoint a caretaker.

## PAROCHIAL CHURCH COUNCIL

The Church Council held a  
meeting on 27th April, when  
the Vicar thanked everybody  
who helped in the celebration  
of Easter Day.

At the beginning of the  
Council Meeting, the Vicar  
made a presentation on behalf  
of the Managers and Staff of  
the School to Mrs. Betty  
Stubbs, our former Caretaker.  
Mrs. Stubbs worked at the  
school for fifteen years and  
earned high praise for her  
excellent work.

The Council discussed a  
proposal which will be de-  
bated at the next Diocesan  
Conference, that recommend-  
ation be submitted to the  
Church Assembly that the  
qualifying age for member-  
ship of Church Councils be  
lowered.

## THE LADIES' WORKING PARTY

(Mrs. M. E. Powell)

The members wish to thank  
all those concerned in helping  
to make the Jumble Sale a  
financial success. £42 was  
raised and it has been  
proposed that a donation of  
£20 be given to the Parish  
Hall Appeal Fund and the  
remainder to the Working  
Party Funds.

## GUIDES

(Mrs. M. Bellamy)

We would like to thank all  
who supported our Coffee

Evening and helped raise the  
funds.

At the moment our theme  
is "Camp" because this year  
we are planning to run our  
own camp. At first we shall  
be limited to using equipped  
sites, but soon we hope to  
buy some equipment of our  
own.

Our new Lieutenant is Miss  
Veronica Wood, a former  
member of St. John's Abbey-  
dale. Veronica is a Queen's  
Guide and a Cadet. She will  
be a great asset to our  
company.

The First Class is a difficult  
test and I am pleased to say  
the older girls are getting on  
with it quite well. Here I  
feel I should extend a thank  
you to all the people who  
have given their time to test  
for badges.

## Dr. BARNARDO'S — 100 years of caring or children

On hundred years ago a  
voice in the wilderness thun-  
dered against the apathy of a  
nation's indifference to the  
fate of its unwanted children  
—it was a voice that demand-  
ed to be heard.

Over a century conditions  
in this country have changed  
—largely due to the efforts of  
men like Dr. Barnardo. When  
Dr. Barnardo began his work  
in 1866 the vast majority of  
children that he took into his  
care were orphans — young  
boys and girls whose parents  
had either died, or as was  
more often the case, abandon-  
ed them to a wretched  
existence of poverty in  
London's East End. He had  
no money. Only a burning  
faith, and the strength and  
courage of his conviction. He  
devoted every minute of his  
life— every ounce of energy  
—to rescuing the children  
nobody wanted to know  
about.

Today in 1966 the problem  
is no longer the provision of  
food and clothes. There are  
many thousands of children  
who, for one reason or  
another are denied the love,  
care and encouragement of a  
family home, and it is this  
which Dr. Barnardo's strive  
to give them.



During our Centenary Year we hope not only to give thanksgiving but to give that thanksgiving the tangible form of forwarding our work for the years to come. We hope to do so by raising enough funds to undertake an ambitious and much needed rebuilding programme, by extending our preventive work and by looking at those things as yet undone. Taking our inspiration from the past, we meet the demands of the present and build for the future.

## WORKING MIRACLES

"I believe in miracles", says John McLeod, an engineer working in one of the famine areas of India. "Especially miracles of this kind", he added. He had just been trying out a mechanical high-speed drilling rig sent out to him by Christian Aid.

He must have felt rather as Moses did when water for his people began to flow from the barren rock! Geologists of the 20th century may now have a scientific explanation, but that makes this gift of water to the thirsty no less miraculous — either to the Israelites under Moses in the days of Exodus or to the Indians under Mrs. Gandhi in their year of famine.

To John McLeod who has only to turn to his textbooks or his own experiences for logical explanations, the water splashing on to the parched earth was still a miracle. And it is being repeated almost daily. "We drive up to a dry field where the dust is blowing all about" he says. "In ten minutes we are ready to bore, first of all the rock chippings and clouds of white rock dust are blasted out. After two hours we have got down about 40 ft. Then the dust stops and water comes out instead".

This gift of water is a Christian gift in every sense of the word. And as the drilling-rig moves from one parched village to another the gift will be shared by more and more people. Some may happen to be Christians themselves, but most of them

are not. All that concerns Christian Aid is that they are thirsty. That seemed to be Christ's main concern when he fed the 5,000.

Today's hungry and thirsty people run into millions and it is the task of Christian Aid to collect the loaves and fishes from today's followers of Christ and to distribute them wisely and with miraculous results, to the world's needy. In the main our loaves and fishes need to be in the form of money. Christian Aid then converts them into drilling-rigs, tractors, vitamin pills, dried milk, livestock, seeds, textbooks, instructors, training centres and demonstration farms. All this from money saved in a modest box or collected from others in a tin. Is that not a miracle, too?

About two-thirds of Christian Aid's £1 million revenue comes from Christian Aid Week each May when, regardless of denomination, church people get together to tell people of the world's most urgent needs and to raise funds with which their own ecumenical agency feeds the hungry, clothes the naked, shelters the homeless. This year the dates are 16th to 21st May.

*Editor's Note:* Already the A.Y.P.A. have started to distribute the envelopes to every house in Totley.

## ALTAR FLOWERS

May 1—Mrs. Stansfield.  
May 8—Mrs. Billard and Mrs. Watson.  
May 15—Mrs. M. Johnson.  
May 22—Mrs. I. Turner.  
May 29—Mrs. Hudson.

## PARISH REGISTERS BAPTISMS

April 10—Anne Marie Barrowcliffe.  
April 17—Louise Gale Bridget Tyler.  
April 24—Sarah Anne Buchanan.

## WEDDINGS

April 2—Paul Bertram Savage and Marie Buxton.  
April 16—Geoffrey Michael Rodgers and Pamela Stratford.

Everything for the  
Home Decorator

**H. J. PURDY**  
(London, City and Guilds)

88 BASLOW ROAD,  
TOTLEY RISE

'Phone 364836

Canadian Wallpapers and Murals  
40 Pattern Books of Crown, Sanderson  
and Continental Wallpapers  
Dulux, Brolac, Valspar, Pammastic  
Magicote, Duradio, Siscomatte, Jellipex

**S. H. WESLEY & SON**  
187 BASLOW ROAD

Newsagent, Stationer  
and Tobacconist

Sweets and Chocolates  
Tel. 363883

Fancy Goods. Toys etc.  
Lyons Ice Cream  
Agent for Arthur Dixon, Royle,  
Hall Mark, and Continental  
Birthday Cards  
Every Popular make of Stationery  
in stock

Open until 1 p.m. on Sundays

## THE BABY BAR

57 BASLOW ROAD

Tel. 361059

Specialists in Babies and  
Infants Wear

Stockists of: Tick A Tee.  
Harrington. Kamella. Ladybird.  
Clydella. Bairnsweare. Shamrock.  
Ladies Hosiery: Ballito & Kayser

## S N O W I T E

the laundry that does —

EXCELLENT

DRY CLEANING

Telephone 50051

## JOHN BONNER

Newsagent

Rust Craft, Gordon Fraser  
and Noel Tatt Greeting Cards  
Holkham Hand-made Studio  
Pottery, Hornsea Pottery,  
Swedish Wood and Glassware,  
Hardware, Horticultural Sundries

15/19 BASLOW ROAD,

Totley Rise

National Health  
Prescription Dispensing

'Phone 3 6 1 0 7 0

## CHEMIST

**W. T. HUTCHINGS, M.P.S.**  
TOTLEY PHARMACY,

185 BASLOW ROAD, TOTLEY  
SHEFFIELD

## FRANK PRIEST

253 BASLOW ROAD

Tel. 3 6 0 5 8 3

Groceries and Provision  
Fresh Fruit & Vegetables

Our Speciality:  
Prime Grade 'A' Danish Bacon  
Delicious Fresh Boiled Ham  
Always a good selection  
of Cheese

Orders Delivered

## S. J. MAYNARD

160 BASLOW ROAD

TOTLEY

Tel. 3 6 3 8 1 2

Hardware Ironmongery  
China Paints  
Garden Requisites

## R. ORME & CO. LTD

Groceries & Provision

Wines, Spirits & Beer

at

TOTLEY

NETHER EDGE

BROOMHILL

and BAKEWELL

## John Heath & Son

The Leading Funeral  
Directors

A reverent and helpful service  
which has continued through  
five generations

14 EARSHAM STREET

SHEFFIELD 4

Telephone 2 3 2 2 9



Enjoy the Social atmosphere at  
**ABBEYDALE HALL**

**The Totley and District  
Community Association**

Thursday, 7.30 p.m.  
Table Tennis, Old Time  
Dancing, Cyclists  
Thursday and Saturday, 7.30 p.m.  
Whist

New activities welcomed

Call at the Hall or write to the  
Sec.: Mrs. E. M. Skinner,  
2 Laverdene Close, Totley

**LAURENCE TYM**

**Family Butcher**

61 BASLOW RD. Totley Rise  
Tel. 360558

168 BASLOW RD. Green Oak  
Totley  
Tel. 361088

We Guarantee Satisfaction  
Orders Delivered in Your District  
Local Fed and Dressed,  
Beef, Pork, Lamb

**THE MARSTONE**

**GARAGE LTD.**

(Official R.A.C. & A.A. Repairs)

Petrol, Oil and Paraffin  
Repairs and Service  
Tyres—New & Remoulded Service  
New and Used Cars  
V.I.P. Petrol and Oils

TOTLEY RISE, SHEFFIELD  
Telephone: 363328

Tel. 360997 (Totley Rise)  
360420 (Dore)

**COLIN THOMPSON  
& SON**

**Butchers and Farmers**  
(Established 1867)

TOTLEY RISE and DORE  
Orders Delivered

Home Fed Pork and Beef  
Prime Quality Lamb and Veal  
Home Made Potted Meat and  
Sausage, Poultry, Bacon & Eggs

Members of the National Federation  
of Fishmongers and the British  
Turkey Federation

**E. CHAMBERS & SON  
FISHMONGERS**

LICENSED GAME DEALERS  
TABLE POULTRY SPECIALISTS  
Established 1899

TOTLEY RISE & HEELEY  
GREEN, SHEFFIELD  
Tel.: 360806; 50623; 364221

Telephone: Sheffield 3 6 0 7 7 4

**VICTOR WILKINSON  
& Sons**

PRACTICAL STEEPLE-JACKS  
BUILDING CONTRACTORS  
WORKS MAINTENANCE  
PROPERTY REPAIRS FLUMING Etc.

1 MAIN AVENUE, TOTLEY

**WHEN IN SHEFFIELD VISIT . . .**

**Punch  
Stores**

**Castle Market**

*Specialists in  
Biscuits and Sweets*

CONTACT

**MEECO**

*for everything Electrical*

Works:

129 ST. MARY'S ROAD, SHEFFIELD 2

'Phone 7 8 3 2 7 / 8

Shop:

284 GLOSSOP ROAD, SHEFFIELD 10

'Phone 2 4 0 2 6

*Contractors for the new Parish Hall*

**GRINDROD  
HEATING**

—ALL SYSTEMS—  
—INDUSTRIAL and DOMESTIC—  
—BY ALL TYPES OF FIRING—

designed and installed by

**ALFRED GRINDROD & CO. LTD**  
122-134 CHARLES STREET · SHEFFIELD 1

TELEPHONE: 27591 (3 Lines)

Over 100 Wines and Spirits in  
Stock at

**BROADHEADS**

*your Mace Grocers*

Open 8.30 a.m. to 10.30 p.m.

Orders Delivered

158 BASLOW RD., TOTLEY

Tel. 360187

**ANGELA**

*Fashion Colour—Styling  
and a fantasy style for the  
special occasion*

86 BASLOW ROAD,  
TOTLEY

Telephone 3 6 3 4 0 9

We specialise in the smaller  
feature that makes your home  
different — to the major  
conversion

Consult . . .

**KENNETH LEE**

**(Calver) LTD.**

COPPERFIELDS,  
CALVER,  
Via SHEFFIELD

Phone Grindleford 469  
and Sheffield 363409

**R. DAMMS**

**BOOT and SHOE REPAIR**

63 BASLOW ROAD,  
Totley Rise, Sheffield

Your Comfort is OUR Concern

**F. E. BRAMALL**

**Dairyman**

Fresh Milk Delivered Daily  
Eggs and Farm Produce

HALL LANE FARM  
TOTLEY

Tel. 361589

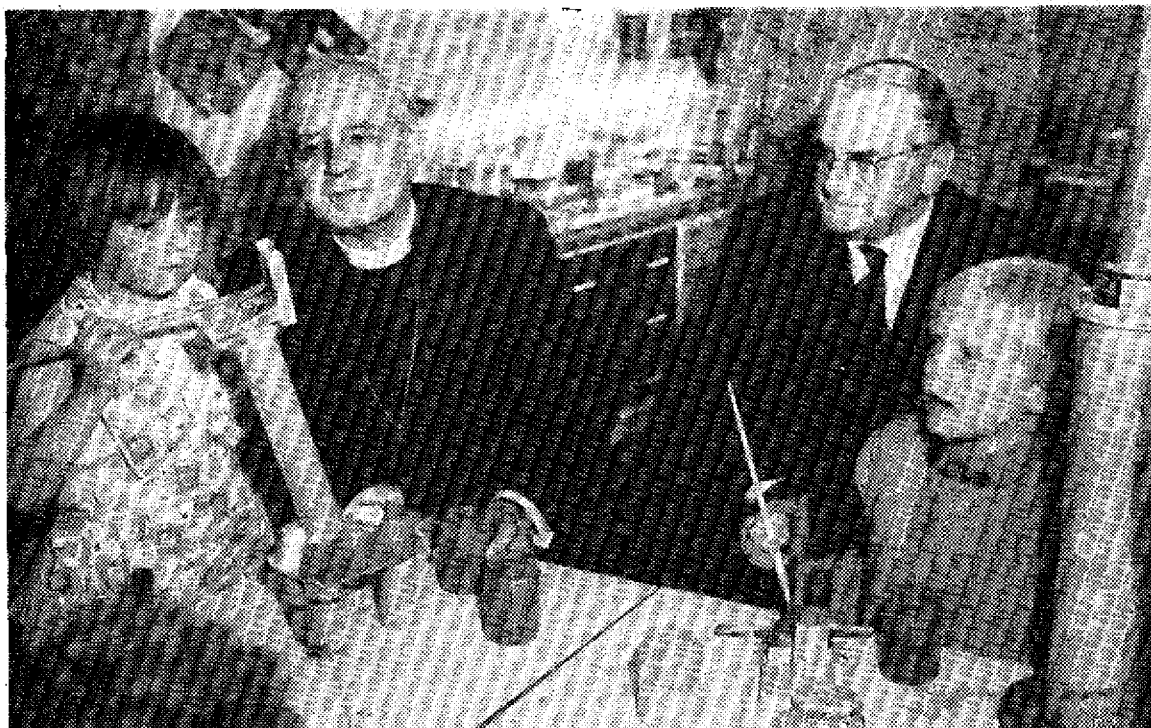


# All Saints' News

JUNE, 1966

Threepence

## THE SCHOOL: OPENING AND DEDICATION



Jane Raynor and Richard Hooker demonstrate their skill to the Bishop and Ald. P. Kirkman  
Photograph by courtesy of the Yorkshire Post

The school hall was packed on the afternoon of May 20th for the Act of Dedication by the Lord Bishop of Derby and the Opening by Sir Herbert Andrew, K.C.M.G., C.B., Permanent Under-Secretary of State in the Department of Education and Science.

The Bishop was met at the school entrance by Jillion Raynor and Martyn Bean, and Jillion asked if he would bless the classrooms. Led by Dr. Keith Blackburn as crucifer and two candle-bearers (Nicholas White and Paul Robins), the Bishop, with the children, Canon O'Neill the Diocesan Director of Education, the Headmaster and Sir Herbert Andrew, then went to bless each classroom.

When this was completed, the Bishop's pro-

cession entered the hall, and Martyn asked the Bishop to dedicate the building. During the Act of Dedication, the Bishop and another of the children — Jane Purdy—led the assembly in a litany of thanksgiving written by the children of J.4.

Sir Herbert Andrew, who was introduced by Alderman Kirkman, Chairman of the Managers, said in his address that he had started his education in a Church School, and spoke of the

ingenuity of our nation in having a system of education in which Church and State can work together. He went on to talk about investment in education, which—he said—was not only the money necessary for the maintenance of voluntary schools but also the respect given by the community to the teaching profession.

Alderman Ballard and the Vicar expressed the thanks of the Education Committee and the School Managers to Sir Herbert and the Bishop.

Kay Thompson made presentations to the Bishop and Sir Herbert on behalf of the School, and David Hall asked that a day's holiday

## TERENCE HARVATT

The sudden death of Terence Harvatt shocked the whole parish. A young man, with so many achievements already to his credit he stood at the threshold of his manhood and there can be no doubt in the minds of any who knew him that his future promised great distinction. Though we are bound to wonder what might have been, his friends have already the example of his zest and enthusiasm, his determination to do all he attempted to the limit of his ability, and his parents and Lyn the precious reality of their love for him and his faith that is gentle, indestructible and the key to our faith.

should be given to commemorate the opening.

Perhaps the most memorable part of the afternoon was the gentle concern and interest that both Sir Herbert and the Bishop showed to the children, and we are sure that they will never forget the day.

The Trustees and Managers of the Church School acknowledge the debt that they owe to Canon O'Neill, who has been their very considerable ally throughout the negotiations for the rebuilding of the school, and to members of the Department of Education and Science and the Local Authority in Sheffield for constant advice and guidance.

continued on page 2

With the compliments of

**VERNON HUDSON** DECORATOR AND PAINTING CONTRACTOR

241 Chesterfield Road, Dronfield, Tel. 2377.

For Freshly Ground Coffee  
For all groceries, provisions,  
meats, beer, wines, spirits and  
tobacco, etc.

If you telephone 365038 and  
give us your order we will be  
pleased to deliver it to your  
home in one of our vans

### GRATTON'S

71 BASLOW ROAD,  
Totley Rise, Sheffield  
FULLY LICENSED

Branch: 251 BASLOW ROAD  
Tel. 3 6 1 3 5 9

IT IS SO EASY TO USE  
FRANKLIN'S CLEANING and  
RENOVATION SERVICES

'Phone 7 8 5 7 1

OR IMMEDIATE COLLECTION

Page Information and Price  
Guide Post Free



6 ECCLESALL ROAD

### A. E. PASHLEY Family Butcher

249 BASLOW ROAD,  
(Main Avenue)  
TOTLEY

'Phone 360634

Lamb, Beef, Pork & Poultry  
Try our Speciality Sausages

Orders Delivered Daily

### BANNERDALE LAUNDRY LTD.

For guaranteed satisfaction in  
Quality and Service

LITTLE LONDON ROAD,  
SHEFFIELD, 8

Phone 50472 for particulars

It's Wool, Nylon or Cotton,  
Knitted or Woven for Knitting  
or Sewing for all the Family...

### I. WHITEHEAD

47 BASLOW ROAD  
Totley Rise

Tel. 362917

Everything for the home dress-  
maker including Belt & Button  
Service. Wide range of Gents  
Underwear, Shirts, Ties etc.

Good selection of Ladies  
Dresses, Jumpers & Underwear

### WILLARS

49 BASLOW ROAD

Totley Rise

'Phone 360390

For Men's, Ladies' and  
Childrens Footwear

Gluc, Tuf, Devonshire, Eagle &  
other makes in stock

High Class Footwear Repairs  
Wellingtons always in stock

### WILLIAM BURTON, M.P.S.

Dispensing Chemist

'Phone 361181

45 BASLOW ROAD,  
Totley Rise

Toilet and Beauty Preparations  
including

Revlon

Coty

Max Factor

Yardley

Nat. Health Insurance Dispensing

### N. B. SHIPLEY

164 BASLOW ROAD,  
TOTLEY

Tel. 365178

KNITTING WOOL

NYLONS

GENERAL DRAPERY

### THE TOTLEY BRIDGE GARAGE LTD.

MOTOR ENGINEERS

TOTLEY RISE

Mobil Petrol and Oils

Paraffin Smokeless Fuel

Standard Triumph Stockists

R.A.C. Agents—Recovery Service  
DAY (360376) NIGHT (361624)

Crypton Tuning

### TOTLEY FRUIT STORE

166 BASLOW ROAD

Tel. 364073

Fresh Flowers, Fruit  
and Vegetables

Orders Delivered Daily

Floral Arrangements, Wedding  
Bouquets and Funeral Flowers  
our Speciality



The School cont. from page 1

In our thanksgiving,  
we must not forget the  
outstanding work of John  
Tinsdeall, Headmaster,  
W. C. Morgan, Deputy  
Headmaster, and the  
staff of teachers. They  
are to be congratulated  
not only on the excell-  
ence of their teaching  
(which was so ably  
demonstrated by the  
work to be seen in the  
classrooms) but also on  
inspiring us all to pro-  
vide them with buildings  
and facilities worthy of  
them.

As Vicar, I must per-  
sonally acknowledge my  
debt to John Tinsdeall,  
who never flagged in his  
determination to make  
the events of May 20th  
possible.

The Managers also  
wish to express their  
thanks for a very fine  
plaque presented by Dr.  
W. D. Pugh, Chairman  
of Firth-Vickers Stain-  
less Steels Ltd., to Mrs.  
Dilys Cooke for the  
parchment inscribed with  
the history of the  
School, and to Miss  
Winson, who has typed  
and filed the several  
hundred letters, compris-  
ing many thousands of  
words written on behalf  
of the Managers during  
the negotiations for and  
the building of the  
school.

### VERNON MATHER

In Derby Cathedral on  
Saturday, May 21st, Mr.  
Vernon Mather was  
admitted to the office of  
Reader.

He has lived in Totley  
most of his life, and was  
educated at the Church  
School and Nether Edge  
Grammar School. His  
genial good humour and  
humility have won him  
many friends in both the  
parish and the diocese,  
and the work that he has  
done as Superintendent  
of the Sunday School  
has been outstanding.  
We have no doubt that  
he will serve the Church  
equally well in his new  
office, and we wish him  
every joy and success.

### CHURCH COUNCIL

The main business of the  
Council at its meeting on  
May 18th was a discussion of  
the Church's work with its  
young members, and in  
particular the future of the  
coffee bar in the crypt on  
Sunday evenings. The views  
of the young people them-  
selves were very ably pre-  
sented by Richard Woolhouse,  
Trevor Vaughan, Stuart Belk  
and Martin Shorland. The  
Council decided that the  
coffee bar should continue  
until the end of July, and  
that in the meantime Mr.  
Edwards, Mr. George, Mr.  
Johnston, Mr. Mather, Mr.  
Shepherd, Mr. Simons, Mr.  
Wood and Mrs. Tym should  
meet the young people to  
discuss how a club can be  
opened in the parish hall  
during the autumn. The  
Vicar and Council were im-  
pressed by the initiative of  
the members who had  
opened the coffee bar, and  
the success they had enjoyed.

Above  
The Bish  
Kirkman  
the youn  
Photograph  
of the S

Below  
Joan Turner  
Joyce Bro  
Sir Herbert  
Photograph  
of the Mo  
Telegraph.

## PARISH HALL

Mr. David Kirkman reported to the Council that the parish hall appeal had raised £6,250; we now owe the Bank £2,900, but still have to receive the final accounts from the builders.

The Council were able to see the clock which had been installed in the hall, and which was an anonymous gift.

## LENT BOXES

Mr. David Kirkman also reported that Lent boxes this year had raised £23 for the work of C.M.S. and S.P.C.K.

## GARDEN OF REMEMBRANCE

The Vicar reported that application was being made for a Faculty for a Garden of Remembrance, in accordance with the decision of the Council on 27th April.

## GARDEN PARTY JUNE 25th

The Garden Party will open at 2.30 p.m. and tickets are now on sale. This year there will be many more games for the children to make it an afternoon for the whole family to enjoy. We invite the children to take part in a fancy dress competition and prizes will be awarded. The classes are:—

1. Under School age.
2. 5 years old to 7.
3. 8 years old to 11.
4. 12 plus.

In the evening there will be a Summer Dance and Barbecue. Tickets for the Dance are now on sale, price 3/6.

## PARISH HALL APPEAL FUND

A Coffee Morning will be held at the home of Mrs. Reynolds, 72 Main Avenue, Totley, on Thursday, 9th June, 10.30—12 noon.

## IS IT MY TURN ?

### ALTAR FLOWERS

June 5—Mrs. Gillott.  
June 12—Mrs. Simons.  
June 19—Mrs. Worrall.  
June 26—Mrs. Kirkman.

Everything for the  
Home Decorator

**H. J. PURDY**  
(London, City and Guilds)

88 BASLOW ROAD,  
TOTLEY RISE

'Phone 364836

Canadian Wallpapers and Murals  
40 Pattern Books of Crown, Sanderson  
and Continental Wallpapers  
Dulux, Brolac, Valspar, Pammastic  
Magicote, Duradio, Siscomatte, Jellipex

**S. H. WESLEY & SON**  
187 BASLOW ROAD  
Newsagent, Stationer  
and Tobacconist  
Sweets and Chocolates  
Tel. 363883

Fancy Goods. Toys etc.  
Lyons Ice Cream  
Agent for Arthur Dixon, Royle,  
Hall Mark, and Continental  
Birthday Cards  
Every Popular make of Stationery  
in stock  
Open until 1 p.m. on Sundays

**THE BABY BAR**  
57 BASLOW ROAD

Tel. 361059

Specialists in Babies and  
Infants Wear

Stockists of: Tick A Tee.  
Harrington. Kamella. Ladybird.  
Clydella. Bairnswear. Shamrock.  
Ladies Hosiery: Ballito & Kayser

## S N O W I T E

the laundry that does —  
EXCELLENT

DRY CLEANING

Telephone 50051

**JOHN BONNER**  
Newsagent

Rust Craft, Gordon Fraser  
and Noel Tatt Greeting Cards  
Holkham Hand-made Studio  
Pottery, Hornsea Pottery,  
Swedish Wood and Glassware,  
Hardware, Horticultural Sundries  
15/19 BASLOW ROAD,  
Totley Rise

National Health  
Prescription Dispensing

'Phone 361070

## CHEMIST

**W. T. HUTCHINGS, M.P.**  
TOTLEY PHARMACY,

185 BASLOW ROAD, TOTLEY  
SHEFFIELD

**FRANK PRIEST**  
253 BASLOW ROAD  
Tel. 360583

Groceries and Provision  
Fresh Fruit & Vegetables

Our Speciality:  
Prime Grade 'A' Danish Bacon  
Delicious Fresh Boiled Ham  
Always a good selection  
of Cheese  
Orders Delivered

**S. J. MAYNARD**  
160 BASLOW ROAD  
TOTLEY

Tel. 363812

Hardware Ironmongery  
China Paints  
Garden Requisites

**R. ORME & CO. LTD.**  
Groceries & Provision  
Wines, Spirits & Beer

at  
TOTLEY  
NETHER EDGE  
BROOMHILL  
and BAKEWELL

**John Heath & Son**

The Leading Funeral  
Directors

A reverent and helpful service  
which has continued through  
five generations

14 EARSHAM STREET  
SHEFFIELD 4

Telephone 23229



and Ald. P.  
with some of  
er children.  
n by courtesy  
ffield Star.

and  
head show  
their work.  
by courtesy  
ning



Enjoy the Social atmosphere at  
**ABBEYDALE HALL**

**The Totley and District  
Community Association**

Thursday, 7.30 p.m.  
Table Tennis, Old Time  
Dancing, Cyclists  
Thursday and Saturday, 7.30 p.m.  
Whist

New activities welcomed  
Call at the Hall or write to the  
Sec.: Mrs. E. M. Skinner,  
2 Laverdene Close, Totley

**LAURENCE TYM  
Family Butcher**

61 BASLOW RD. Totley Rise  
Tel. 360558

168 BASLOW RD. Green Oak  
Totley  
Tel. 361088

We Guarantee Satisfaction  
Orders Delivered in Your District  
Local Fed and Dressed,  
Beef, Pork, Lamb

**THE MARSTONE  
GARAGE LTD.**

(Official R.A.C. & A.A. Repairs)

Petrol, Oil and Paraffin  
Repairs and Service  
Tyres—New & Remoulded Service  
New and Used Cars  
V.I.P. Petrol and Oils

TOTLEY RISE, SHEFFIELD  
Telephone: 363328

Tel. 360997 (Totley Rise)  
360420 (Dore)

**COLIN THOMPSON  
& SON**

Butchers and Farmers  
(Established 1867)

TOTLEY RISE and DORE  
Orders Delivered

Home Fed Pork and Beef  
Prime Quality Lamb and Veal  
Home Made Potted Meat and  
Sausage. Poultry, Bacon & Eggs

Members of the National Federation  
of Fishmongers and the British  
Turkey Federation

**E. CHAMBERS & SON  
FISHMONGERS**

LICENSED GAME DEALERS  
TABLE POULTRY SPECIALISTS  
Established 1899

TOTLEY RISE & HEELEY  
GREEN, SHEFFIELD

Tel.: 360806; 50623; 364221

Telephone: Sheffield 3 6 0 7 7 4

**VICTOR WILKINSON  
& Sons**

PRACTICAL STEEPLE-JACKS  
BUILDING CONTRACTORS  
WORKS MAINTENANCE  
PROPERTY REPAIRS PLUMBING Etc.

1 MAIN AVENUE, TOTLEY

*WHEN IN SHEFFIELD VISIT...*

**Punch  
Stores**  
**Castle Market**

*Specialists in  
Biscuits and Sweets*

CONTACT

**MEECO**

*for everything Electrical*

Works:

129 ST. MARY'S ROAD, SHEFFIELD 2

'Phone 7 8 3 2 7 / 8

Shop:

284 GLOSSOP ROAD, SHEFFIELD 10

'Phone 2 4 0 2 6

*Contractors for the new Parish Hall*

**GRINDROD  
HEATING**

— ALL SYSTEMS —  
— INDUSTRIAL and DOMESTIC —  
— BY ALL TYPES OF FIRING —

designed and installed by

**ALFRED GRINDROD & CO. LTD**  
**122-134 CHARLES STREET · SHEFFIELD 1**

TELEPHONE: 27591 (3 Lines)

Over 100 Wines and Spirits in  
Stock at

**BROADHEADS**

*your Mace Grocers*

Open 8.30 a.m. to 10.30 p.m.

Orders Delivered

158 BASLOW RD., TOTLEY

Tel. 360187

**ANGELA**

*Fashion Colour—Styling  
and a fantasy style for the  
special occasion*

86 BASLOW ROAD,  
TOTLEY

Telephone 3 6 3 4 0 9

We specialise in the smallest  
feature that makes your home  
different — to the major  
conversion

Consult . . .

**KENNETH LEE  
(Calver) LTD.**

COPPERFIELDS,  
CALVER,  
Via SHEFFIELD

Phone Grindleford 469  
and Sheffield 363409

**R. DAMMS**

**BOOT and SHOE REPAIRS**

63 BASLOW ROAD,  
Totley Rise, Sheffield

Your Comfort is OUR Concern

**F. E. BRAMALL**

**Dairyman**

Fresh Milk Delivered Daily  
Eggs and Farm Produce

HALL LANE FARM  
TOTLEY

Tel. 361589



The Vicar writes :-

## SOMETHING TO THINK ABOUT

During the next three months all of us will be enjoying our holidays. It sometimes appears that the Church hibernates during the summer, as most of our activities and organisations close down, but one group of people will be doing a lot of thinking and work in the next few months.

It is nearly three years since we held our Stewardship Campaign, and it is time that we began to make some assessment of what we have achieved and what we have failed to do. The financial success has been very considerable; our total income has risen from £1,500 in 1961 to some £3,000 last year. Largely as a result of the Christian Stewardship Campaign, we had the confidence to borrow £6,000 from the Bank to build our parish hall.

Certainly new life flowed into many of our church organisations and activities through Christian Stewardship, and there was a very significant improvement in attendance at worship, but we are also conscious of some things that we failed to do. Perhaps it is of our failures that we should be thinking during the months before the new Christian Stewardship year starts in the autumn. There are three questions which we should all ask.

First, did we think that Christian Stewardship would be an automatic answer to all our problems? In fact there is nothing magical about it; it is the application

of theology to everyday things, the effect of Christian discipleship on our ownership of wealth, time and talent. We know that one does not grow automatically in Christian discipleship, and we should not be surprised that one does not grow automatically in Christian Stewardship. I think we have begun to realise that to be truly stewards in God's creation is a wider concept than we first thought; perhaps we first understood stewardship as something to do with the Church, whereas we should have realised that it has to do with the whole world. Christian Stewardship is not something that we do with our money or our spare

time, but something that affects our commitment to our work, our family and our community at every point.

Secondly, did we fail to make the loving fellowship of the family of Christ real in the life of our congregation? Are people welcomed when they attend our church by the joy and happiness that should pervade the family of God, or are they ignored by a tightly organised community.

Finally, do we take too narrow a view of the way in which we use our time and talent? Do we ask people to think of them only in Church terms, when really we should be thinking about them in

terms of the world? The Christian in local government can use his time and talent for the building of God's kingdom; the Christian who belongs to no organisation can show the love of Christ to a neighbour who is helpless because of physical or mental handicap. This is doing the work that Jesus wants us to do. Perhaps the use of time and talent is not just a question of developing the family life of the Christian community, but also of looking around us to find individuals to whom Jesus would so readily have shown His love.





Freshly Ground Coffee  
all groceries, provisions,  
meats, beer, wines, spirits and  
cocoa, etc.  
you telephone 365038 and  
we us your order we will be  
pleased to deliver it to your  
home in one of our vans

**GRATTON'S**  
71 BASLOW ROAD,  
Totley Rise, Sheffield  
FULLY LICENSED  
Branch: 251 BASLOW ROAD  
Tel. 3 6 1 3 5 9

IT IS SO EASY TO USE  
**FRANKLIN'S CLEANING and  
RENOVATION SERVICES**  
Phone 7 8 5 7 1  
IMMEDIATE COLLECTION  
Page Information and Price  
Guide Post Free



6 ECCLESALL ROAD

**A. E. PASHLEY**  
Family Butcher

249 BASLOW ROAD,  
(Main Avenue)  
TOTLEY  
Phone 360634

Lamb, Beef, Pork & Poultry  
Try our Speciality Sausages  
Orders Delivered Daily

**BANNERDALE  
LAUNDRY  
LTD.**

guaranteed satisfaction in  
Quality and Service

111 LITTLE LONDON ROAD,  
SHEFFIELD, 8

Phone 50472 for particulars

it's Wool, Nylon or Cotton,  
knitted or Woven for Knitting  
Sewing for all the Family . .

**I. WHITEHEAD**  
47 BASLOW ROAD  
Totley Rise  
Tel. 362917

Everything for the home dress-  
maker including Belt & Button  
service. Wide range of Gents  
Underwear, Shirts, Ties etc.

Good selection of Ladies  
Dresses, Jumpers & Underwear

## WILLARS

49 BASLOW ROAD  
Totley Rise  
Phone 360390

*For Men's, Ladies' and  
Childrens Footwear*

Gluv, Tuf, Devonshire, Eagle &  
other makes in stock

High Class Footwear Repairs  
Wellingtons always in stock

**WILLIAM BURTON,**  
M.P.S.

**Dispensing Chemist**  
Phone 361181

45 BASLOW ROAD,  
Totley Rise

Toilet and Beauty Preparations  
including

Revlon

Coty

Max Factor

Yardley

Nat. Health Insurance Dispensing

**N. B. SHIPLEY**

164 BASLOW ROAD,  
TOTLEY  
Tel. 365178

**KNITTING WOOL  
NYLONS  
GENERAL DRAPERY**

**THE TOTLEY BRIDGE  
GARAGE LTD.**

**MOTOR ENGINEERS**  
TOTLEY RISE

Mobil Petrol and Oils  
Paraffin Smokeless Fuel  
Standard Triumph Stockists

R.A.C. Agents—Recovery Service  
DAY (360376) NIGHT (361624)

Crypton Tuning

**TOTLEY FRUIT STORE**

166 BASLOW ROAD  
Tel. 364073

*Fresh Flowers, Fruit  
and Vegetables*

**Orders Delivered Daily**

Floral Arrangements, Wedding  
Bouquets and Funeral Flowers  
our Speciality

## UNCLE TIMOTHY AND THE GOLDFISH

Everybody in the parish was very pleased that Mr. Ernest Tindall, O.B.E., was able to open our Garden Party on June 25th. Mr. Tindall is regarded with great affection in Totley, not only because of his great record of public service as a member of the City Council for this ward and one of the Managers of our Church School, but also because of the many friends he made as "Uncle Timothy" of "The Telegraph".

This year the Garden Party made a profit of well over £200 and this represents many hours of work by our ladies' organisations; we know that Mrs. Harvatt, Chairman of the Ladies' Working Party, Mrs. Billard, Chairman of the Ladies Club, and Mrs. Maynard, Enrolling Member of the Mothers' Union, must be very pleased with the efforts of their members. We thank them.

Mr. Gordon Edwards, Chairman of the Garden Party Committee, was determined that we should have many more activities and events for the children. I do not know how many homes in Totley have acquired goldfish, but if any of you have queries about them Mr. Edwards will be pleased to deal with them. The Children's Carnival and Fancy Dress Competition were a great success, and the children and parents are to be congratulated. Two other children who played a most important part at the Garden Party were Katherine Snazell and Diane Greenhoff who presented bouquets to Uncle Timothy and Mrs. Williams.

We also thank the "back-room boys" — Mr. Don Gill who looked after the lighting; Mr. Simons who took charge of the public address equipment; Mr. Ted Blackburn and

his sons Keith and Brian, and Mr. Bob Bridges, for all their hard work in again preparing the grounds.

The dance in the evening was a great success, and Keith Blackburn is to be congratulated on organising it so well. We must also thank Mr. Frank Thompson, the girls of Totley Hall and the Scouts for the excellent barbecue.

## CONGRATULATIONS

To Dr. Keith Blackburn on his appointment as a Lecturer in Mathematics in the University of Birmingham. Whatever Keith does is done well, and we know that at Birmingham he will win many friends in and outside the University.

## FAREWELL

Mr. and Mrs. White, Stephen and Nicholas will shortly leave Totley to live at Waddington. We shall be very sorry indeed to see them go, as during the time they have been in the parish the whole family has given so much to the life of the Church. We know that they will play a full and active part in the life of their new Church.

## THE CHURCH OF ENGLAND CHILDREN'S SOCIETY

(Mrs. Simons)

A Coffee Morning is to be held at 57 Sunnyvale Road,



on Wednesday, July 27th at 10 a.m. Proceeds are to be sent to the Children's Society. At the Coffee Morning there will be a Children's Stall for "Nearly New" books and toys. This effort by the children proved a great success at the last function, and we ask for your support. Gifts for this stall can be accepted at any time, either before, or on the day of the Coffee Morning.

### THE DRAMA GROUP OPEN MEETING

Totley, All Saints' Drama Group is to hold an OPEN MEETING in the Parish Hall on Monday, July 18th at 8 p.m. A cordial invitation to attend is extended to anyone who is interested in the activities of the group.

### THE LADIES' WORKING PARTY

The Working Party is on holiday during July and August. Next meeting will be Tuesday, September 27th.

### THE LADIES' CLUB

(Mrs. C. B. Greenhoff)

The July club meeting is on FRIDAY, July 8th. Mrs. Nicol is to demonstrate flower arrangements.

The ANNUAL DINNER is to be held on Tuesday, July 19th at "The Barn", Bakewell.

A Coffee Morning is to be held on Wednesday, July 20th at the home of Mrs. Parkin, 133 Green Oak Road, Totley.

### GUIDES and BROWNIES

GUIDES. Pat Bellamy has been awarded her "Little House Badge". This is a special award for a collection of certain badges, and is

incidentally the first ever awarded to a member of our Guide Company. Pat was awarded this badge at camp.

BROWNIES. Pat King has now attained her warrant of Tawny Owl. Pat has been with the Brownies a very long time and we would like to record our appreciation to her, and our congratulations on this achievement.

### ALTAR FLOWERS

IS IT MY TURN ?

July 3—Mrs. Lee.

July 10—Mrs. Coleman.

July 17—Mrs. Greenhoff  
and Mrs. Bridges.

July 24—Mrs. Hawke.

July 31—Mrs. Freeman.

### Unique Joint Venture Begins . . . . .

### OVERSEAS AID SHOP 141 NORFOLK STREET, SHEFFIELD 1

This is the first combined full time shop involving Christian Aid, Oxfam and War on Want. Please help to achieve our objects—to finance long term overseas projects, to relieve hunger, ignorance and disease.

We NEED, and can sell at their proper value, your gifts of :—

China, Glassware,  
Metalware of all sorts,  
Jewellery, Watches,  
Clocks, Records, Books,  
Paintings, Pens, Toys,  
Musical Instruments etc.

We shall be open to receive your gifts from :—

18th JULY 1966 onwards  
between  
9 a.m. and 5.30 p.m.

Please let us know if you and your friends have collected so many gifts that you need us to fetch them !

**GIFT SHOP OPENS FOR  
THE SALE OF GIFTS ON  
28th JULY 1966, 9 a.m.**

Everything for the  
Home Decorator

**H. J. PURDY**  
(London, City and Guilds)

88 BASLOW ROAD,  
TOTLEY RISE

'Phone 364836

Canadian Wallpapers and Murals  
40 Pattern Books of Crown, Sanderson  
and Continental Wallpapers  
Dulux, Brolac, Valspar, Pammastic  
Magicote, Duradio, Siscomatte, Jellitex

**S. H. WESLEY & SON**  
187 BASLOW ROAD  
Newsagent, Stationer  
and Tobacconist  
Sweets and Chocolates  
Tel. 363883

Fancy Goods. Toys etc.  
Lyons Ice Cream  
Agent for Arthur Dixon, Royle,  
Hall Mark, and Continental  
Birthday Cards  
Every Popular make of Stationery  
in stock

Open until 1 p.m. on Sundays

### THE BABY BAR

57 BASLOW ROAD

Tel. 361059

Specialists in Babies and  
Infants Wear

Stockists of : Tick A Tee.  
Harrington. Kamella. Ladybird.  
Clydella. Bairnsweat. Shamrock.  
Ladies Hosiery: Ballito & Kayser

### S N O W I T E

the laundry that does —

EXCELLENT

DRY CLEANING

Telephone 50051

### JOHN BONNER

Newsagent

Rust Craft, Gordon Fraser  
and Noel Tatt Greeting Cards  
Holkham Hand-made Studio  
Pottery, Hornsea Pottery,  
Swedish Wood and Glassware,  
Hardware, Horticultural Sundries

15/19 BASLOW ROAD,  
Totley Rise

National Health  
Prescription Dispensing

'Phone 3 6 1 0 7 0

### CHEMIST

**W. T. HUTCHINGS, M.P.S.**  
TOTLEY PHARMACY,

185 BASLOW ROAD, TOTLEY  
SHEFFIELD

### FRANK PRIEST

253 BASLOW ROAD

Tel. 3 6 0 5 8 3

Groceries and Provision  
Fresh Fruit & Vegetable

Our Speciality :  
Prime Grade 'A' Danish Bacon  
Delicious Fresh Boiled Ham  
Always a good selection  
of Cheese

Orders Delivered

### S. J. MAYNARD

160 BASLOW ROAD

TOTLEY

Tel. 3 6 3 8 1 2

Hardware Ironmongery

China Paints

Garden Requisites

### R. ORME & CO. LTD

Groceries & Provisions

Wines, Spirits & Beers

at

TOTLEY

NETHER EDGE

BROOMHILL

and BAKEWELL

### John Heath & Son

The Leading Funeral  
Directors

A reverent and helpful service  
which has continued through  
five generations

14 EARSHAM STREET  
SHEFFIELD 4

Telephone 2 3 2 2 9

Enjoy the Social atmosphere at  
**ABBEYDALE HALL**

**The Totley and District  
Community Association**

Thursday, 7.30 p.m.  
Table Tennis, Old Time  
Dancing, Cyclists  
Thursday and Saturday, 7.30 p.m.  
Whist

New activities welcomed  
Call at the Hall or write to the  
Sec.: Mrs. E. M. Skinner,  
2 Laverdene Close, Totley

**LAURENCE TYM**  
**Family Butcher**  
61 BASLOW RD. Totley Rise  
Tel. 360558

168 BASLOW RD. Green Oak  
Totley  
Tel. 361088

We Guarantee Satisfaction  
Orders Delivered in Your District  
Local Fed and Dressed,  
Beef, Pork, Lamb

**THE MARSTONE**  
**GARAGE LTD.**  
(Official R.A.C. & A.A. Repairs)

Petrol, Oil and Paraffin  
Repairs and Service  
Tyres—New & Remoulded Service  
New and Used Cars  
V.I.P. Petrol and Oils

TOTLEY RISE, SHEFFIELD  
Telephone: 363328

Tel. 360997 (Totley Rise)  
360420 (Dore)

**COLIN THOMPSON**  
**& SON**

**Butchers and Farmers**  
(Established 1867)

TOTLEY RISE and DORE  
Orders Delivered  
Home Fed Pork and Beef  
Prime Quality Lamb and Veal  
Home Made Potted Meat and  
Sausage, Poultry, Bacon & Eggs

Members of the National Federation  
of Fishmongers and the British  
Turkey Federation

**E. CHAMBERS & SON**  
**FISHMONGERS**

LICENSED GAME DEALERS  
TABLE POULTRY SPECIALISTS  
Established 1899

TOTLEY RISE & HEELEY  
GREEN, SHEFFIELD  
Tel.: 360806; 50623; 364221

Telephone: Sheffield 3 6 0 7 7 4

**VICTOR WILKINSON**  
**& Sons**

PRACTICAL STEEPLE-JACKS  
BUILDING CONTRACTORS  
WORKS MAINTENANCE  
PROPERTY REPAIRS PLUMBING Etc.

1 MAIN AVENUE, TOTLEY

*WHEN IN SHEFFIELD VISIT . . .*

**Punch**  
**Stores**

**Castle Market**

*Specialists in  
Biscuits and Sweets*

CONTACT

**MEECO**

*for everything Electrical*

Works:

129 ST. MARY'S ROAD, SHEFFIELD 2

'Phone 7 8 3 2 7 / 8

Shop:

284 GLOSSOP ROAD, SHEFFIELD 10

'Phone 2 4 0 2 6

*Contractors for the new Parish Hall*

**GRINDROD**  
**HEATING**

— ALL SYSTEMS —  
— INDUSTRIAL and DOMESTIC —  
— BY ALL TYPES OF FIRING —

designed and installed by

**ALFRED GRINDROD & CO. LTD**  
**122-134 CHARLES STREET · SHEFFIELD 1**

TELEPHONE: 27591 (3 Lines)

Over 100 Wines and Spirits in  
Stock at

**BROADHEADS**

*your Mace Grocers*

Open 8.30 a.m. to 10.30 p.m.

Orders Delivered

158 BASLOW RD., TOTLEY

Tel. 360187

**ANGELA**

*Fashion Colour—Styling  
and a fantasy style for that  
special occasion*

86 BASLOW ROAD,  
TOTLEY

Telephone 3 6 3 4 0 9

We specialise in the smallest  
feature that makes your home  
different — to the major  
conversion

Consult . . .

**KENNETH LEE**  
(Calver) LTD.  
COPPERFIELDS,  
CALVER,  
Via SHEFFIELD

Phone Grindleford 469  
and Sheffield 363409

**R. DAMMS**

**BOOT and SHOE REPAIRS**

63 BASLOW ROAD,  
Totley Rise, Sheffield

Your Comfort is OUR Concern

**F. E. BRAMALL**  
**Dairyman**

Fresh Milk Delivered Daily  
Eggs and Farm Produce

HALL LANE FARM  
TOTLEY  
Tel. 361589



## A Long Hard Look at CHRISTIAN STEWARDSHIP

As Autumn approaches, the Stewardship Committee is planning the Renewal Campaign which will take place later in the year. The Initial Campaign which took place three years ago has been a topic of discussion, criticism, and controversy in the Parish ever since it was suggested. However, one thing stands out quite clearly. It was a step forward for the Parish. If one could imagine a gigantic balance, with one pan weighing the worth-while achievements of our campaign, and the other weighing the snags, dissatisfactions, and complaints about Christian Stewardship, then I am sure the balance would tip down heavily in favour of Christian Stewardship.

During the training of the original committee, the one plea which was heard loud and often was the one "Stewardship might be alright for Parish 'a' in Derby, or Parish 'b' in Sheffield, but how will it work in Totley?" To have obtained the services of a clairvoyant who could have supplied the answer would have been very helpful. However, we now have the answer, and the experience of the last three years must not be ignored.

The Handbook of Christian Stewardship published by the Central Board of Finance of the Church of England contains these words.

"If Christian Stewardship is taught merely as a means of raising money for the Church it will fail. If it is taught with the single-minded emphasis upon the accountability of the faithful steward to God for the right use of all with which God has entrusted him, the needs of the Church will look after themselves".

In the Initial Campaign the Committee was determined to place just as great an emphasis on the use of our time and talents, as on the use of our money, but it would now seem that we were wrong in thinking that a few ticks on a carefully

prepared time and talents sheet would take care of this.

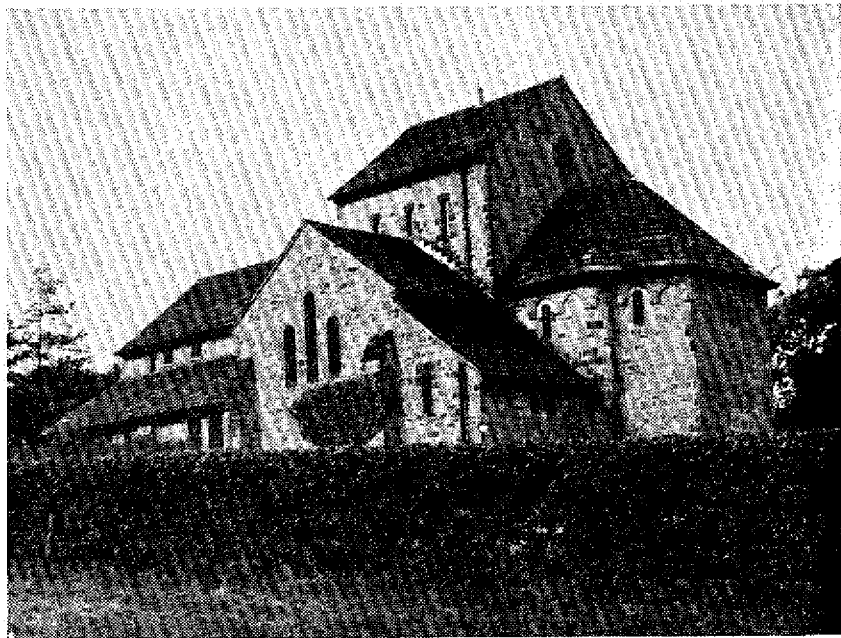
After three years the time and talents results are not encouraging. Perhaps it was that the Parish was not geared up to accept and utilise the many offers of time and talents that flowed in. Perhaps it was that the visitors were over-enthusiastic in their work, and people offered to undertake more than their commitments would allow. Certainly there are many people whose stewardship of time could not be questioned, yet who had little to mark on our sheet. Defining service to God under little headings is certainly a most unsatisfactory way of making people aware of their responsibilities. This side of Stewardship

requires a "Long Hard Look".

The Stewardship of money poses problems. There was a confusion in the Parish over what might be referred to as "extra fund raising activities". The problem here is that if a person commits himself financially to the limits after being given the assurance that no more demands will be made on him, then he should not be placed in the embarrassing position of being asked for further contributions at social and other functions. However, if all fund raising is to cease with Stewardship, apart from specific efforts for a special cause, then the channel by which many non-stewardship families contributed to the Church would be closed. This

problem was not resolved before the Initial Campaign. It must be before the Renewal Campaign. At the moment, the cynical ones who kept a little in hand, knowing that the many fund raising activities held by the Church in Totley are very dear to the hearts of the people, and would be most unlikely to cease, seem to have the best of both worlds.

There is indeed much to discuss before Autumn. One disadvantage of the traditional British "sang froid" is that grievances felt and opinions held often never reach the ears of the people who may be able to help. Certain people smoulder under a sense of anger against Stewardship without giving the Church a chance to



Freshly Ground Coffee  
all groceries, provisions,  
meats, beer, wines, spirits and  
tobacco, etc.  
you telephone 365038 and  
we will deliver it to your  
home in one of our vans

**GRATTON'S**  
71 BASLOW ROAD,  
Totley Rise, Sheffield  
FULLY LICENSED  
Branch: 251 BASLOW ROAD  
Tel. 3 6 1 3 5 9

IT IS SO EASY TO USE  
FRANKLIN'S CLEANING and  
RENOVATION SERVICES

Phone 7 8 5 7 1  
IMMEDIATE COLLECTION

Page Information and Price  
Guide Post Free



6 ECCLESALL ROAD

**A. E. PASHLEY**  
Family Butcher

249 BASLOW ROAD,  
(Main Avenue)  
TOTLEY  
Phone 360634

Lamb, Beef, Pork & Poultry  
Try our Speciality Sausages  
Orders Delivered Daily

**BANNERDALE**  
LAUNDRY  
LTD.

guaranteed satisfaction in  
Quality and Service

111 LONDON ROAD,  
SHEFFIELD, 8

Phone 50472 for particulars

Wool, Nylon or Cotton,  
Knitted or Woven for Knitting  
Sewing for all the Family . .

**I. WHITEHEAD**  
47 BASLOW ROAD  
Totley Rise  
Tel. 362917

Everything for the home dress-  
maker including Belt & Button  
service. Wide range of Gents  
Underwear, Shirts, Ties etc.

Good selection of Ladies  
Dresses, Jumpers & Underwear

## WILLARS

49 BASLOW ROAD  
Totley Rise

Phone 360390

*For Men's, Ladies' and  
Childrens Footwear*

Gluv, Tuf, Devonshire, Eagle &  
other makes in stock

High Class Footwear Repairs  
Wellingtons always in stock

**WILLIAM BURTON,**  
M.P.S.

Dispensing Chemist

Phone 361181

45 BASLOW ROAD,  
Totley Rise

Toilet and Beauty Preparations  
including

Revlon

Coty

Max Factor

Yardley

Nat. Health Insurance Dispensing

**N. B. SHIPLEY**

164 BASLOW ROAD,  
TOTLEY  
Tel. 365178

KNITTING WOOL

NYLONS

GENERAL DRAPERY

**THE TOTLEY BRIDGE**  
GARAGE LTD.

MOTOR ENGINEERS

TOTLEY RISE

Mobil Petrol and Oils

Paraffin Smokeless Fuel

Standard Triumph Stockists

R.A.C. Agents—Recovery Service  
DAY (360376) NIGHT (361624)

Crypton Tuning

**TOTLEY FRUIT STORE**

166 BASLOW ROAD  
Tel. 364073

*Fresh Flowers, Fruit  
and Vegetables*

Orders Delivered Daily

Floral Arrangements, Wedding  
Bouquets and Funeral Flowers  
our Speciality

explain or rectify the error.  
I would not advocate the  
hot-blooded Latin approach  
to venting these feelings, or  
perhaps some members of  
the committee might receive  
a "straight left" to the chin  
in reality. However, I am  
certain that the Stewardship  
Committee would prefer to  
receive any such comment  
first hand, rather than on the  
"bush telegraph", always an  
unreliable source of informa-  
tion.

If the Renewal Campaign  
is approached with an open  
mind, and if the Parish is  
prepared to build on the  
foundation laid three years  
ago, and to accept the errors  
made as the inevitable price  
of any worth-while venture,  
and to learn from them, then  
there is no reason why the  
Renewal Campaign should  
not be a resounding success.

## CONTRIBUTIONS BY THE CHURCH SCHOOL

Mr. Walters visits  
the School

(Jillion Raynor)

Mr. Walters often visits,  
and we are always pleased to  
see him. On Wednesday  
mornings he comes to take  
part in our Morning Service.  
At this service the children  
announce the hymns and read  
the lesson. The children also  
read the prayers. Mr. Walters  
gives us a short address, and  
says the Blessing at the end  
of the service.

He also comes to teach our  
class on Friday mornings. He  
teaches us about the work of  
the Church, and about the  
Church Services. When he  
comes in he often asks "Are  
you happy?" This seems to  
be one of his favourite ex-  
pressions.

Mr. Turner's visit  
(The Diocesan visit)

(Junior 4 children)

On June 28th, The Reverend  
Turner came from Eyam to  
visit our school. We held a  
short service in the Hall.  
Some of us played the  
recorder for the hymn:

"In our work and in our play,  
Jesus be Thou ever near".  
Paul Robins read the lesson  
from the New English Bible,

Mrs. Murray's class and Miss  
Burton's class sang hymns  
and said some prayers they  
had been learning. Mrs.  
Parkin's class also said a  
prayer. After the service Mr.  
Turner visited all the classes  
to see the work the children  
had been doing in their  
scripture lessons. He came  
to our class last of all. When  
he was writing on our black-  
board his chalk broke at least  
three times and we all had a  
good laugh. He asked us  
questions about the different  
services that are held in  
Church. We were all very  
sorry when it was time for  
him to go. Mr. Turner then  
went into the Staffroom to  
talk to the teachers.

We were granted a half-  
holiday, and most of us went  
to Edale with Mr. Tinsdeall.  
Two of the ladies from Totley  
College came with us, they  
were Mrs. Baines and Miss  
Bishop.

## OUR HIKE AROUND EDALE

(Paul Robins)

Yesterday we went by train  
to Edale. We walked from  
the station through the  
village and on to the start of  
the Pennine Way. We passed  
the Church and the Nag's  
Head Inn. We went down a  
slippery path and crossed a  
bridge over Grindsbrook. The  
path went along the slopes of  
the ridge on our right. We  
went through a forest. When  
we came out of the forest we  
went over a stile and came  
to a stream called the Golden  
Clough. There was a tree  
leaning over the stream so we  
had to go over this as there  
was no bridge. We had a  
rest and looked at the map.  
About  $\frac{1}{4}$  of a mile further on  
we crossed Grindsbrook by  
stepping stones. After that  
we had a rest on a little  
hillock. When we first  
stopped there was about  $\frac{1}{4}$ th  
of a mile between us and the  
rearguard. We looked at the  
map and the different moun-  
tains. Mr. Tinsdeall said the  
next part of the walk would  
be the hardest. We had  
walked about 2 miles. Then  
we came to a place where a  
gorge came in from the right  
and a gorge came in from  
straight ahead. Mr. Tinsdeall

decided to go up the one straight ahead. It was called Grindsbrook Gorge. It was very hard going up the gorge and we had a long rest at the top. Gary had bought a lot of sweets and finished them all off at the top. We were on the edge of the Kinder Scout plateau. There were lots of peat bogs. We had to go down a very steep hillside. I only did half of it on my feet. The rest of it I slid or rolled. Eventually I got to the bottom. The slope was called Grindslow Knoll. At the bottom there was a stream called Crawden Brook. We walked quite a long way (about a mile) by the stream and then turned to go round the bottom of Grindslow Knoll. We had tea here. I only just finished in time. We continued our walk into Edale. We had to walk through a stream about 6 times. We walked altogether 6 miles. I bought a 10d. bottle of orange pop in Edale. In the tunnel we opened all the windows to let in the smoke. I enjoyed it very much and would like to do it again. The train fare was 2/11 cheap day return.

## THE CHURCH GARDEN PARTY

(Joyce Broadhead, J3)

On June 25th I went to the Garden Party with Joan and Judith, my friends. We all entered for the Fancy Dress Parade. Joan and I were dressed as a horse, and Judith was an Indian who was to lead us. There were several classes for the Fancy Dress, starting with a class for very little children, and finishing with a class for twelve year olds. Our class, the 9—11 class seemed to have most people in it. Julie Kolade, a girl from our school won first prize, she was dressed as a witch, and looked very frightening. We won second prize, and this meant that there had to be three prizes for us. Joan and I received a manicure set, whilst Judith won a sewing set. We got out of our costumes and went into the large tent. No sooner had we got inside when someone told us that there was a game where goldfish were given as prizes. Off we went

straight away. I won three, Kay won three, and her little brother, Philip, won one. Kay bought a goldfish bowl. We all went to my house and left the goldfish. Then we returned to the Garden Party. I went on to throw a dice and have a go on the Lucky Dip. I went home at half past five.

## CHILDREN'S PRAYERS

(Junior 1/2 children)

### A Prayer for Poor People

God bless all poor people in countries far away and near. Give them plenty of food to eat, and keep them happy. Give them plenty of clothes to wear, and shoes to put on their feet. Make them happy with their work.

### A Prayer for Sick People

O God look after the sick people so that they soon get better. Keep them happy even though they are not well. If we know any people who are ill we will visit them. Tell us what to say to them to cheer them up.

### A Prayer for Food.

Dear Lord, thank you for the food we eat. Thank you for the rain that helps the crops to grow, and the sun that helps the crops to ripen. Help the people in other countries that have no food at all, and give them money to buy some. Everytime we grumble because we don't like our food make us remember all the people who have none at all.

## PARISH REGISTER BAPTISM

May 1—Karen Patricia Howden.  
May 8—David John Finney.  
May 15—Kathrine Jane Williams.  
May 15—Louise Helen McDermott.  
May 15—Sarah Jane Richards.  
May 15—Jonathan Simon Parish.  
May 22—Lisa Jane Robinson.  
May 29—Richard James Cotterill.  
June 5—Caroline Margaret Sutton.  
June 12—Emile Van Der Laan.

Everything for the  
Home Decorator

**H. J. PURDY**  
(London, City and Guilds)

88 BASLOW ROAD,  
TOTLEY RISE

'Phone 364836

Canadian Wallpapers and Murals  
40 Pattern Books of Crown, Sanderson  
and Continental Wallpapers  
Dulux, Brulac, Valspar, Pammastic  
Magicote, Duradio, Siscomatte, Jellipex

## S. H. WESLEY & SON

187 BASLOW ROAD

Newsagent, Stationer  
and Tobacconist

Sweets and Chocolates  
Tel. 363883

Fancy Goods. Toys etc.  
Lyons Ice Cream  
Agent for Arthur Dixon, Royle,  
Hall Mark, and Continental  
Birthday Cards  
Every Popular make of Stationery  
in stock

Open until 1 p.m. on Sundays

## THE BABY BAR

57 BASLOW ROAD

Tel. 361059

Specialists in Babies and  
Infants Wear

Stockists of: Tick A Tee.  
Harrington. Kamella. Ladybird.  
Clydella. Bairnsweare. Shamrock.  
Ladies Hosiery: Ballito & Kayser

## S N O W I T E

the laundry that does —

EXCELLENT

DRY CLEANING

Telephone 50051

## JOHN BONNER

Newsagent

Rust Craft, Gordon Fraser  
and Noel Tatt Greeting Cards  
Holkham Hand-made Studio  
Pottery, Hornsea Pottery,  
Swedish Wood and Glassware,  
Hardware, Horticultural Sundries

15/19 BASLOW ROAD,

Totley Rise

National Health  
Prescription Dispensing

'Phone 361070

## CHEMIST

**W. T. HUTCHINGS, M.P.S.**  
TOTLEY PHARMACY,

185 BASLOW ROAD, TOTLEY  
SHEFFIELD

## FRANK PRIEST

253 BASLOW ROAD

Tel. 360583

Groceries and Provision  
Fresh Fruit & Vegetables

Our Speciality:  
Prime Grade 'A' Danish Bacon  
Delicious Fresh Boiled Ham  
Always a good selection  
of Cheese

Orders Delivered

## S. J. MAYNARD

160 BASLOW ROAD

TOTLEY

Tel. 363812

Hardware Ironmongery  
China Paints  
Garden Requisites

## R. ORME & CO. LTD.

Groceries & Provision

Wines, Spirits & Beer

at

TOTLEY

NETHER EDGE

BROOMHILL

and BAKEWELL

## John Heath & Son

The Leading Funeral  
Directors

A reverent and helpful service  
which has continued through  
five generations

14 EARSHAM STREET

SHEFFIELD 4

Telephone 23229

Enjoy the Social atmosphere at  
**ABBEYDALE HALL**

**The Totley and District  
Community Association**

Thursday, 7.30 p.m.  
Table Tennis, Old Time  
Dancing, Cyclists  
Thursday and Saturday, 7.30 p.m.  
Whist

New activities welcomed  
Call at the Hall or write to the  
Sec.: Mrs. E. M. Skinner,  
2 Laverdene Close, Totley

**LAURENCE TYM  
Family Butcher**

61 BASLOW RD. Totley Rise  
Tel. 360558

168 BASLOW RD. Green Oak  
Totley  
Tel. 361088

We Guarantee Satisfaction  
Orders Delivered in Your District  
Local Fed and Dressed,  
Beef, Pork, Lamb

**THE MARSTONE  
GARAGE LTD.**

(Official R.A.C. & A.A. Repairs)

Petrol, Oil and Paraffin  
Repairs and Service  
Tyres—New & Remoulded Service  
New and Used Cars  
V.I.P. Petrol and Oils

TOTLEY RISE, SHEFFIELD  
Telephone: 363328

Tel. 360997 (Totley Rise)  
360420 (Dore)

**COLIN THOMPSON  
& SON**

Butchers and Farmers  
(Established 1867)

TOTLEY RISE and DORE  
Orders Delivered

Home Fed Pork and Beef  
Prime Quality Lamb and Veal  
Home Made Potted Meat and  
Sausage, Poultry, Bacon & Eggs

Members of the National Federation  
of Fishmongers and the British  
Turkey Federation

**E. CHAMBERS & SON  
FISHMONGERS**

LICENSED GAME DEALERS  
TABLE POULTRY SPECIALISTS  
Established 1899

TOTLEY RISE & HEELEY  
GREEN, SHEFFIELD

Tel.: 360806; 50623; 364221

Telephone: Sheffield 3 6 0 7 7 4

**VICTOR WILKINSON  
& Sons**

PRACTICAL STEEPLE-JACKS  
BUILDING CONTRACTORS  
WORKS MAINTENANCE  
PROPERTY REPAIRS PLUMBING Etc.

1 MAIN AVENUE, TOTLEY

**WHEN IN SHEFFIELD VISIT...**

**Punch  
Stores**  
**Castle Market**

*Specialists in  
Biscuits and Sweets*

CONTACT

**MEECO**

*for everything Electrical*

Works:

129 ST. MARY'S ROAD, SHEFFIELD 2

'Phone 7 8 3 2 7 / 8

Shop:

284 GLOSSOP ROAD, SHEFFIELD 10

'Phone 2 4 0 2 6

*Contractors for the new Parish Hall*

**GRINDROD  
HEATING**

—ALL SYSTEMS—  
—INDUSTRIAL and DOMESTIC—  
—BY ALL TYPES OF FIRING—

designed and installed by

**ALFRED GRINDROD & CO. LTD**  
**122-134 CHARLES STREET · SHEFFIELD 1**

TELEPHONE: 27591 (3 Lines)

Over 100 Wines and Spirits in  
Stock at

**BROADHEADS**

*your Mace Grocers*

Open 8.30 a.m. to 10.30 p.m.

Orders Delivered

158 BASLOW RD., TOTLEY

Tel. 360187

**ANGELA**

*Fashion Colour—Styling  
and a fantasy style for that  
special occasion*

86 BASLOW ROAD,  
TOTLEY

Telephone 3 6 3 4 0 9

We specialise in the smallest  
feature that makes your home  
different — to the major  
conversion

Consult . . .

**KENNETH LEE  
(Calver) LTD.**

COPPERFIELDS,  
CALVER,  
Via SHEFFIELD

Phone Grindleford 469  
and Sheffield 363409

**R. DAMMS**

**BOOT and SHOE REPAIRS**

63 BASLOW ROAD,  
Totley Rise, Sheffield

Your Comfort is OUR Concern

**F. E. BRAMALL**  
**Dairyman**

Fresh Milk Delivered Daily  
Eggs and Farm Produce

HALL LANE FARM  
TOTLEY

Tel. 361589

# All Saints' News

SEPTEMBER, 1966

Threepence

The Vicar writes:

## TIME ON YOUR HANDS

The Stewardship Committee have begun to make their plans for a Renewal Campaign in the autumn. This time, they can look at what we did three years ago and assess where they think there is room for improvement.

The most perplexing problem appears to be the way in which we tried to organise the use of time and talent. There are 168 hours in the week, and for the Christian all the hours are part of our stewardship of the life that God has given us. It is impossible to draw a line and say "These hours belong to the world and these to the Church". Our time belongs to ourselves, and our accountability — through our conscience — is to Jesus. As we go about our daily work, harnessing the resources of the world, engaged in the competition of commerce and industry, we are being stewards of our time. The housewife, who makes her home a place of real happiness, is surely making Christian use of her time. The hours we spend together as families, whether they be hours of laughter or tears, must be high on our list of Christian priorities, but when all these hours have been added up we still have to find time to build God's kingdom elsewhere than in our home and our place of work.

We have to play our full part in the life of the Christian community where we live; to worship God and find inspiration and strength from joining together in prayer and praise with other members of the Christian family in our village. We have to find time to maintain the family house of God, as we maintain our own homes.

## Ann Richens reports:

St. Mark's Centre, Sungei Buloh, Selangor, Malaysia

5th July, 1966

It feels much longer than three months since I arrived back here — and already England seems a little like a dream. Here there has been an almost complete change of staff: Pastor Lee is no longer here so Pastor Tsung from Jin Jang comes over twice a week for a prayer meeting and service; however, there is still a full-time evangelist here — Miss Woo who came to replace Miss Doh who has gone to Ipoh. Marilyn Taylor the Australian nurse, has just gone on furlough; we also had a doctor for a brief period but two weeks ago she left here for Hong Kong and if

The humdrum in our house and garden are matched by the humdrum jobs in the church building. Again, when we are asked or see need, we must show the love of God to our neighbour.

As we pledge a specific amount of our money to God and His Church, for the building of His kingdom, so we should be prepared to pledge a specific amount of our time, first to our worship of God, second to serving our community, and third caring for His Church.

Should we not, at the end of our campaign, when we offer to God in His church promises of our money, also offer our promises of time. Only we and our conscience will know how far we meet the standard that we have set ourselves, but certainly we will be better people if we make for ourselves promises about the time that we give to God.



she comes back it will be with the Government and not in mission work. In fact the only old friend left at the moment is Mrs. Gan who is still coming in to help in the maternity home and has also moved to a home so close that she says if I stand outside and shout she will hear—though I haven't tried that yet. We also have a new midwife in the home — Miss Tsung — and have also just added an untrained nurse, Miss Tuen to the clinic.

The work itself seems to have changed quite a bit as our recent doctor would only take up to number four or five babies — which reduced our numbers by almost a half. However, as both Marilyn Taylor and the doctor have gone I now go to the clinic with one of the midwives from here to help as well. We have no permanent doctor but mercifully a Doctor Pearson who is working at the leprosy settlement very kindly comes in for half

an hour or so at the end of most clinics to see anyone I'm worried about. He is not prepared to take any responsibility for the Maternity Home so we are picking our cases with care.

The nicest thing this time is that we are working together much more. Every morning we all have prayers together in the Maternity Home and Miss Woo is always delighted to come out visiting any patients or translating in the clinic. At the moment the Sunday School is divided into three classes which vary from 15 to 30 in each class with the weather or near approach of any festival. There is a nucleus of fifty or so who arrive enthusiastically any time from 12 mid-day to 1.30 when we start. The youth club is also fairly flourishing but most of the members are younger than

With the compliments of

**VERNON HUDSON** DECORATOR AND PAINTING CONTRACTOR

241 Chesterfield Road, Dronfield, Tel. 2377.



**Freshly Ground Coffee**  
all groceries, provisions,  
meats, beer, wines, spirits and  
tobacco, etc.  
you telephone 365038 and  
we us your order we will be  
pleased to deliver it to your  
home in one of our vans

**GRATTON'S**  
71 BASLOW ROAD,  
Totley Rise, Sheffield  
FULLY LICENSED  
Branch: 251 BASLOW ROAD  
Tel. 3 6 1 3 5 9

**IT IS SO EASY TO USE**  
**FRANKLIN'S CLEANING AND**  
**RENOVATION SERVICES**

**Phone 7 8 5 7 1**  
**IMMEDIATE COLLECTION**

**Page Information and Price**  
**Guide Post Free**



**6 ECCLESALL ROAD**

**A. E. PASHLEY**  
**Family Butcher**

249 BASLOW ROAD,  
(Main Avenue)  
TOTLEY  
Phone 360634

Lamb, Beef, Pork & Poultry  
our Speciality Sausages  
Orders Delivered Daily

**BANNERDALE**  
**LAUNDRY**  
**LTD.**

guaranteed satisfaction in  
Quality and Service

ITTLE LONDON ROAD,  
SHEFFIELD, 8

Phone 5 0 4 7 2 for particulars

it's Wool, Nylon or Cotton,  
knitted or Woven for Knitting  
Sewing for all the Family . .

**I. WHITEHEAD**  
47 BASLOW ROAD  
Totley Rise  
Tel. 362917

everything for the home dress-  
maker including Belt & Button  
service. Wide range of Gents  
Underwear, Shirts, Ties etc.

Good selection of Ladies  
Dresses, Jumpers & Underwear

## WILLARS

49 BASLOW ROAD  
Totley Rise

Phone 360390

For Men's, Ladies' and  
Childrens Footwear

Glue, Tuf, Devonshire, Eagle &  
other makes in stock

High Class Footwear Repairs  
Wellingtons always in stock

**WILLIAM BURTON,**  
M.P.S.

**Dispensing Chemist**

Phone 361181

45 BASLOW ROAD,  
Totley Rise

Toilet and Beauty Preparations  
including

Revlon

Coty

Max Factor

Yardley

Nat. Health Insurance Dispensing

**N. B. SHIPLEY**

164 BASLOW ROAD,

TOTLEY

Tel. 365178

**KNITTING WOOL**

**NYLONS**

**GENERAL DRAPERY**

**THE TOTLEY BRIDGE**  
**GARAGE LTD.**

**MOTOR ENGINEERS**

**TOTLEY RISE**

Mobil Petrol and Oils

Paraffin Smokeless Fuel

Standard Triumph Stockists

R.A.C. Agents—Recovery Service  
DAY (360376) NIGHT (361624)

Crypton Tuning

**TOTLEY FRUIT STORE**

166 BASLOW ROAD

Tel. 364073

Fresh Flowers, Fruit  
and Vegetables

Orders Delivered Daily

Floral Arrangements, Wedding  
Bouquets and Funeral Flowers  
our Speciality

previously. The church mem-  
bership remains very small:  
we had one adult baptism of a  
lady recently, followed by the  
first Christian wedding ever to  
be held in the church. It  
was a very happy morning—  
with all the Sunday School  
children rejoicing in the  
opportunity of being able to  
pick every flower in sight for  
decoration and the bus  
stopping for quite a while for  
driver and passengers to have  
a really good look.

This time it is nice being  
here as most of the patients  
who come in are old acquaint-  
ances whose babies we deliv-  
ered last year. In the  
same way there are people we  
know in most houses when  
we go visiting. I think this  
time one of the things that  
struck me most, or afresh,  
was the amazing knowledge  
that everyone had of every-  
body else's business. Of  
course this is greatly helped  
by the fact that several  
families will often be living  
together in a house—and by  
the frequent visiting of  
friends' houses—which are all  
pretty close together anyway,  
with wide open doors and  
windows.

We have much to thank  
God for here — particularly  
our present fellowship to-  
gether. Perhaps you would  
like to think of the diocese as  
they consider the engagement  
of a young Taiwan doctor to  
come here, and also of him as  
he decides (there is also the  
prospect of a temporary lady  
doctor who is retiring from  
Hong Kong).

My best wishes to you all,  
and thanks for your thoughts  
and prayers.

ANN RICHENS.

## YOUNG PEOPLE'S CLUB

The Church Council are  
hoping to open a Senior  
Young People's Club, which  
will meet on Wednesday  
evenings, probably starting in  
October. The young people  
will run the club themselves,  
but naturally it will be  
necessary for at least two  
adults to be in attendance. If  
some of our parishioners  
would undertake to be re-  
sponsible for one Wednesday  
evening a month, it would be

a very great help. If you are  
willing to do this, please let  
the Vicar know as soon as  
possible. We also need help  
with our Junior Club on  
Thursday evenings.

## SUNDAY SCHOOL

The Sunday School re-  
opens on September 11th,  
and we look forward to a  
very successful "term".  
Under Mr. Mather's leader-  
ship the Sunday School  
flourishes, and we are con-  
scious of the debt we owe to  
him and all the teachers.

We need help in the  
Kindergarten, and if any  
mothers of young children are  
willing to undertake this very  
important and worth-while  
job, will they please contact  
Mr. S. V. Mather, the Sunday  
School Superintendent, or the  
Vicar.

## CONFIRMATION

The Service of Confirma-  
tion will be held on Sunday,  
December 4th, at 6.30 p.m.,  
and classes will begin this  
month—for Juniors at 2.30  
on Sunday afternoons and for  
adults at 7.30 p.m.

Being confirmed is the  
admission on our part that we  
wish to be full members of  
the Church, joining in the  
family meal of Holy Com-  
munion and confirming the  
promises that our parents and  
godparents made on our  
behalf when we were  
baptised. The Bishop, on  
behalf of the Church, con-  
firms us in our membership.

## HOLIDAYS

On Sunday, August 28th,  
the Vicar will be away. There  
will be no celebration of Holy  
Communion at 8 a.m. The  
services will be :-

9.30 a.m. The Family  
Communion.  
6.30 p.m. Evensong and  
Sermon.

## CHILDREN'S SOCIETY

Mrs. Simons' Coffee Morn-  
ing for the Church of England  
Children's Society raised  
£13.10.0d., and Mrs. Simons  
thanks everybody who con-  
tributed. It was good to  
see Linda, Erica, Michael,  
Richard and Ian helping to  
make the Coffee Morning a  
success.

## CONGRATULATIONS

We were all pleased to hear of James Powell's success in gaining his LL.B. Degree at Manchester University. He is now off to study for his Law Society Finals and we wish him every success.

We also congratulate Mr. and Mrs. Glew on the birth of their baby, Lorraine.

## A COFFEE MORNING

This will be held at 44 Totley Brook Road, home of Mrs. Jones, on Thursday, September 15th, 10 a.m. — 12 p.m. Tickets 1/-.

## WHIST DRIVE

On Friday, September 16th 1966 at 7.30 p.m. in Totley Parish Hall. Refreshments. Tickets 2/-.

## MOTHERS' UNION

Our Autumn programme commences on Tuesday, September 13th at 2.20 with a service in church, when new members and visitors will be very welcome.

The Festivals at both Tideswell and Hope were very well attended and we were fortunate to have the Bishop of Derby and the Dean of Lichfield, whose addresses were most inspiring and encouraging.

## LADIES' CLUB

Tuesday, September 6th—Colour slides of "Old and new Sheffield."

Tuesday, September 20th—Autumn Coffee Evening.  
October 4th—Beetle Drive.

## LADIES' WORKING PARTY

In response to many enquiries, we are pleased to report that the total amount raised by the Ladies' Working Party Stalls at the Garden Party was £176.

With this excellent result in mind, we are now making every effort to make the Autumn Fayre another successful occasion, thus enabling us to make another substantial donation to the Parish Hall Appeal Fund.

Our next meeting will be on Tuesday, 27th September at 2.15 p.m. and will be pleased to welcome any ladies wishing to join us.

## PARISH REGISTER

### BAPTISMS

July 24—Philip Swift.

July 31—Lorraine Glew.

Aug. 14—Catherine Michaela Hirst.

### WEDDINGS

June 4—Alan Gordon Doyle and Christine Wrigglesworth.

June 6—John Crawford Sutherland and Roberta Joan Orme.

July 2—Colin Peter Burt and Lyn Judith Barrett.

Aug. 15—Stewart Wilkinson and Marie Cooper.

### ALTAR FLOWERS

Sept. 4—Mrs. Robinson.

Sept. 11—Mrs. Powell and Mrs. Ibbotson.

Sept. 18—Mrs. Seals.

Sept. 25—Mrs. Pratt.

## FEED THE MINDS

From 1st to 8th October there will be a house to house collection in Sheffield for Feed the Minds Campaign. In Sheffield we hope to raise the money for the Bengal Literature Centre in Barrackpore, near Calcutta, India. This serves a wide area.

Two thirds are illiterate. For those who can read there are no libraries and few good books, and so it is easy for new literates to lapse back into illiteracy. The Centre has made a good start and has raised £600 locally. Among other activities, the programme includes the training of journalists to write books on all subjects, including books for new literates. Perhaps one day the 'Each one teach one' project will be successful. Men and women are being trained to teach adult illiterates: as drama writers, for drama has a special attraction for Indians who are born actors: as radio script writers: and to become booksellers at the bookstalls being planned.

Will you help this Centre to serve Bengal?

Everything for the  
Home Decorator

**H. J. PURDY**  
(London, City and Guilds)

88 BASLOW ROAD,  
TOTLEY RISE

'Phone 364836

Canadian Wallpapers and Murals  
40 Pattern Books of Crown, Sanderson  
and Continental Wallpapers  
Dulux, Brolac, Valspar, Pammastic  
Magicote, Duradio, Siscomatte, Jellipex

**S. H. WESLEY & SON**

187 BASLOW ROAD

Newsagent, Stationer  
and Tobacconist

Sweets and Chocolates

Tel. 363883

Fancy Goods. Toys etc.

Lyons Ice Cream

Agent for Arthur Dixon, Royle,

Hall Mark, and Continental

Birthday Cards

Every Popular make of Stationery

in stock

Open until 1 p.m. on Sundays

**THE BABY BAR**

57 BASLOW ROAD

Tel. 361059

Specialists in Babies and  
Infants Wear

Stockists of: Tick A Tee.

Harrington. Kamella. Ladybird.

Clydella. Bairnsweat. Shamrock.

Ladies Hosiery: Ballito & Kayser

**S N O W I T E**

*the laundry that does —*

**EXCELLENT**

**DRY CLEANING**

Telephone 50051

**JOHN BONNER**

Newsagent

Rust Craft, Gordon Fraser

and Noel Tatt Greeting Cards

Holkham Hand-made Studio

Pottery, Hornsea Pottery,

Swedish Wood and Glassware,

Hardware, Horticultural Sundries

15/19 BASLOW ROAD,

Totley Rise

National Health  
Prescription Dispensing

'Phone 3 6 1 0 7 0

**CHEMIST**

**W. T. HUTCHINGS, M.P.S.**  
TOTLEY PHARMACY,

185 BASLOW ROAD, TOTLEY  
SHEFFIELD

**FRANK PRIEST**

253 BASLOW ROAD

Tel. 3 6 0 5 8 3

**Groceries and Provision  
Fresh Fruit & Vegetable**

Our Speciality:  
Prime Grade 'A' Danish Bacon  
Delicious Fresh Boiled Ham  
Always a good selection  
of Cheese

Orders Delivered

**S. J. MAYNARD**

160 BASLOW ROAD

TOTLEY

Tel. 3 6 3 8 1 2

Hardware Ironmongery

China Paints

Garden Requisites

**R. ORME & CO. LTD.**

Groceries & Provisions

Wines, Spirits & Beers

at

TOTLEY

NETHER EDGE

BROOMHILL

and BAKEWELL

**John Heath & Son**

The Leading Funeral  
Directors

A reverent and helpful service  
which has continued through  
five generations

14 EARSHAM STREET

SHEFFIELD 4

Telephone 2 3 2 2 9

Enjoy the Social atmosphere at  
**ABBEYDALE HALL**

**The Totley and District  
Community Association**

Thursday, 7.30 p.m.  
Table Tennis, Old Time  
Dancing, Cyclists  
Thursday and Saturday, 7.30 p.m.  
Whist

New activities welcomed  
Call at the Hall or write to the  
Sec.: Mrs. E. M. Skinner,  
2 Laverdene Close, Totley

**LAURENCE TYM**  
Family Butcher  
1 BASLOW RD. Totley Rise  
Tel. 360558

68 BASLOW RD. Green Oak  
Totley  
Tel. 361088

We Guarantee Satisfaction  
Orders Delivered in Your District  
Local Fed and Dressed,  
Beef, Pork, Lamb

**THE MARSTONE  
GARAGE LTD.**  
(Official R.A.C. & A.A. Repairs)

Petrol, Oil and Paraffin  
Repairs and Service  
Tyres—New & Remoulded Service  
New and Used Cars  
V.I.P. Petrol and Oils

TOTLEY RISE, SHEFFIELD  
Telephone: 363328

Tel. 360997 (Totley Rise)  
360420 (Dore)

**COLIN THOMPSON  
& SON**

Butchers and Farmers  
(Established 1867)

TOTLEY RISE and DORE

Orders Delivered  
Home Fed Pork and Beef  
Prime Quality Lamb and Veal  
Home Made Potted Meat and  
Sausage. Poultry, Bacon & Eggs

Members of the National Federation  
of Fishmongers and the British  
Turkey Federation

**E. CHAMBERS & SON**  
FISHMONGERS

LICENSED GAME DEALERS  
ABLE POULTRY SPECIALISTS  
Established 1899

TOTLEY RISE & HEELEY  
GREEN, SHEFFIELD

Tel.: 360806; 50623; 364221

Telephone: Sheffield 3 6 0 7 7 4

**VICTOR WILKINSON  
& Sons**

PRACTICAL STEEPLE-JACKS  
BUILDING CONTRACTORS  
WORKS MAINTENANCE  
PROPERTY REPAIRS PLUMBING Etc.

1 MAIN AVENUE, TOTLEY

*WHEN IN SHEFFIELD VISIT . . .*

**Punch  
Stores**

**Castle Market**

*Specialists in  
Biscuits and Sweets*

CONTACT

**MEECO**

*for everything Electrical*

Works:

129 ST. MARY'S ROAD, SHEFFIELD 2

'Phone 7 8 3 2 7 / 8

Shop:

284 GLOSSOP ROAD, SHEFFIELD 10

'Phone 2 4 0 2 6

*Contractors for the new Parish Hall*

**GRINDROD  
HEATING**

—ALL SYSTEMS—  
—INDUSTRIAL and DOMESTIC—  
—BY ALL TYPES OF FIRING—

designed and installed by

**ALFRED GRINDROD & CO. LTD**  
122-134 CHARLES STREET · SHEFFIELD 1

TELEPHONE: 27591 (3 Lines)

Over 100 Wines and Spirits in  
Stock at

**BROADHEADS**

*your Mace Grocers*

Open 8.30 a.m. to 10.30 p.m.

**Orders Delivered**

158 BASLOW RD., TOTLEY

Tel. 360187

**ANGELA**

*Fashion Colour—Styling  
and a fantasy style for that  
special occasion*

86 BASLOW ROAD,  
TOTLEY

Telephone 3 6 3 4 0 9

We specialise in the smallest  
feature that makes your home  
different — to the major  
conversion

Consult . . .

**KENNETH LEE**  
(Calver) LTD.

COPPERFIELDS,  
CALVER,  
Via SHEFFIELD

Phone Grindleford 469  
and Sheffield 363409

**R. DAMMS**

*BOOT and SHOE REPAIRS*

63 BASLOW ROAD,  
Totley Rise, Sheffield

Your Comfort is OUR Concern

**F. E. BRAMALL**  
Dairyman

Fresh Milk Delivered Daily  
Eggs and Farm Produce

HALL LANE FARM  
TOTLEY

Tel. 361589



# All Saints' News

OCTOBER, 1966

Threepence

The Vicar writes:

## LIMITED OR UNLIMITED

I suppose that only business men really understand what is meant by "Ltd." after the name of a company. To most of us it seems to add dignity, but I am told that — in point of fact — it really means that the legal liability of a shareholder is limited to the amount of his shareholding.

Christian Stewardship Unlimited sounds an odd title, but Christian Stewardship Limited would be even odder.

We have begun our second Christian Stewardship Campaign — a campaign of renewal and rededication, in which we hope to discover further truths about Christian Stewardship; about Christian responsibility.

As a Church — as the family of God — and as individual members of it, we know in theory that we should talk about Christian Stewardship as unlimited, as limitless. There is no fixed amount of resources that God has made available to His people for the building of His kingdom. As we harness more and more of the power of God's world, of God's universe, the potential is boundless. If we wish, if the world wishes, not only can the hungry be fed and disease eradicated, but every child born into God's world can enjoy the full richness of human experience. There is no limit to the capital that God has given us to build His kingdom, where love, peace, truth and justice can flourish, not as abstract virtue, but as the visible realities of schools and hospitals, homes and factories, churches and clinics, democratic assemblies and courts of justice.

But there are limits to Christian Stewardship; limits which we impose, as individuals; as the family of God; as nations. We can choose to limit the resources that are available for the building of God's kingdom; we can limit the liabilities which we accept; only we can decide whether we will show to our neighbours, and realise for ourselves, the unlimited nature of being stewards in God's world.



## CONFIRMATION

Confirmation classes are now beginning, for adults after Evensong on Sundays and for Juniors at 2.30 in the afternoon. If you wish to join a class, will you please contact the Vicar or Churchwardens?

## HARVEST THANKSGIVING

The Harvest Thanksgiving Services will be held on Sunday, October 2nd—

- 8.00 a.m. The Holy Communion.
- 9.30 a.m. The Family Communion.
- 11.00 a.m. The Holy Communion.
- 2.30 p.m. Children's Service.
- 6.30 p.m. Evensong, Sermon and Procession;  
Preacher:  
The Right Revd. Thomas Parfitt.

At the evening service the Visitors for our Stewardship Campaign will be commissioned. Stewardship seems to have an infinite capacity for surprises. Three years ago, when the first Campaign was over, many of us perhaps thought that we knew all the answers, and that we had arrived; now we know how wrong we then were. Because of our successes and our failures, we have grown in understanding of the commitment and dedication that are required of us if we are to be true members of the family of God. We start our second campaign of renewal and rededication with new hopes and inspiration.

With the compliments of

**VERNON HUDSON** DECORATOR AND PAINTING CONTRACTOR

241 Chesterfield Road, Dronfield, Tel. 2377.

Freshly Ground Coffee  
all groceries, provisions,  
beets, beer, wines, spirits and  
tobacco, etc.  
If you telephone 365038 and  
send us your order we will be  
pleased to deliver it to your  
home in one of our vans

**GRATTON'S**  
71 BASLOW ROAD,  
Totley Rise, Sheffield  
FULLY LICENSED  
Branch: 251 BASLOW ROAD  
Tel. 3 6 1 3 5 9

IT IS SO EASY TO USE  
**FRANKLIN'S CLEANING and  
RENOVATION SERVICES**  
Phone 7 8 5 7 1  
IMMEDIATE COLLECTION  
Page Information and Price  
Guide Post Free



6 ECCLESALL ROAD

**A. E. PASHLEY**  
Family Butcher  
249 BASLOW ROAD,  
(Main Avenue)  
TOTLEY  
Phone 360634  
Lamb, Beef, Pork & Poultry  
Try our Speciality Sausages  
Orders Delivered Daily

**BANNERDALE  
LAUNDRY  
LTD.**  
guaranteed satisfaction in  
Quality and Service  
LITTLE LONDON ROAD,  
SHEFFIELD, 8  
Phone 5 0 4 7 2 for particulars

It's Wool, Nylon or Cotton,  
Knitted or Woven for Knitting  
Sewing for all the Family . .

**I. WHITEHEAD**  
47 BASLOW ROAD  
Totley Rise  
Tel. 362917

Everything for the home dress-  
maker including Belt & Button  
service. Wide range of Gents  
Underwear, Shirts, Ties etc.  
Good selection of Ladies  
Dignans, Jumpers & Underwear

## WILLARS

49 BASLOW ROAD  
Totley Rise  
Phone 360390

*For Men's, Ladies' and  
Childrens Footwear*

Glue, Tuf, Devonshire, Eagle &  
other makes in stock

High Class Footwear Repairs  
Wellingtons always in stock

**WILLIAM BURTON,**  
M.P.S.

**Dispensing Chemist**  
Phone 361181

45 BASLOW ROAD,  
Totley Rise

Toilet and Beauty Preparations  
including

Revlon

Coty

Max Factor

Yardley

Nat. Health Insurance Dispensing

**N. B. SHIPLEY**

164 BASLOW ROAD,

TOTLEY

Tel. 365178

**KNITTING WOOL**

**NYLONS**

**GENERAL DRAPERY**

**THE TOTLEY BRIDGE  
GARAGE LTD.**

**MOTOR ENGINEERS**

**TOTLEY RISE**

Mobil Petrol and Oils

Paraffin Smokeless Fuel

Standard Triumph Stockists

R.A.C. Agents—Recovery Service  
DAY (360376) NIGHT (361624)

Crypton Tuning

**TOTLEY FRUIT STORE**

166 BASLOW ROAD

Tel. 364073

*Fresh Flowers, Fruit  
and Vegetables*

**Orders Delivered Daily**

Floral Arrangements, Wedding  
Bouquets and Funeral Flowers  
our Speciality

## A LAYMAN LOOKS AT TIME & TALENTS

There are three ways in  
which we should consider  
applying our Time & Talent  
to the day by day function of  
the Church.

The first is our attendance  
at worship, in order to  
strengthen our belief and  
renew our faith. By so doing  
the example which we as  
practising Christians set, in  
our daily lives, will be the  
more effective.

Secondly, we must think as  
to how we can best serve our  
Church. A Church impresses  
in a number of ways, one of  
which is by its appearance.  
We are fortunate at Totley  
because through the efforts  
of some ladies and gentlemen,  
who have given some of their  
time and talent to the Church,  
our appearance is very com-  
mendable. The silver is  
bright and the arrangement of  
the flowers gives every indi-  
cation that the Church is  
cared for. Much time is  
given, unfortunately by only  
a few, to keep the Church  
garden trim and this is a  
major task. Every effort is  
made to maintain the foot-  
paths and attention is given  
to the drainage to ensure that  
at all times the approaches to  
the Church are accessible and  
clean.

Visitors to the Church  
comment "What a nice little  
Church" but no doubt this  
impression is influenced more  
by the appearance than the  
architecture, which in its  
setting is very pleasing.

The ladies and gentlemen  
of the organisations who  
undertake the task of the care  
of the Church need help, and  
a little time given by others,  
with a minimum of talent,  
would be a worth-while  
service.

Finally, how can each of us  
help the community as a  
whole? The Young People  
would perhaps appreciate  
leadership. If they would  
tell the Church of their  
requirements, perhaps we  
could help. There are ways  
surely in which we could  
assist the elderly members of  
the Parish. An hour spent in

service of this order would  
be very worthwhile and very  
gratifying to the donor.

We must all have ideas as  
to how the members of the  
Church can help the Com-  
munity, and if we make the  
effort we could all find that  
Time and Talent to help  
share out the service to  
others which we know is  
needed.

## CHRISTMAS CARDS

Last year the demand for  
Christmas Cards of the  
Children's Society and Christ-  
ian Aid was so great, that  
this year we will have cards  
on sale in the Parish Hall  
after the 9.30 and 6.30  
services on Sunday, October  
23rd, and also during the  
afternoon and evening of  
Tuesday, October 25th.

By buying these cards,  
which are very attractive,  
we shall help considerably  
the work of the Children's  
Society and the Christian Aid  
Organisation.

## GUIDES and BROWNIES

Meetings and activities are  
in full swing after the holi-  
days, and are well attended.  
Saturday, September 17th  
saw the Brownies, joining  
with other Brownie Packs  
from Dore and Totley in  
Revels at Hillfoot Top. This  
was organised by Mr.  
Willows, and proved most  
enjoyable.

Our fund raising JUMBLE  
SALE will be held in the  
Parish Hall on October 15th.  
We would welcome gifts of  
jumble and offers of assist-  
ance.

## SCOUT NOTES

(Peter Draycott)

The Summer camp for  
Junior Scouts was held in  
Beer, Devon this year.  
Although the weather was  
not good, the boys enjoyed  
themselves, and were very  
proud to defeat a local troop  
at football. Guests at the  
camp were Mr. A. P. Birley,  
A.C.C. Training, and Mr. D.  
Kirk, D.S.M. of Chesterfield.

The Seniors visited Scotland, and seemed to find the fine weather. The canoe was a great attraction at this camp.

Congratulations to Trevor Vaughan and Richard Woolhouse on their walk up the Pennine Way as part of their journey to Scotland. Trevor was also awarded his Queen's Scout Badge in August.

## LADIES' WORKING PARTY

(Mrs. E. Powell)

After the first meeting since the Summer break the Ladies' Working Party is making preparations for the Autumn Fayre, which is to be held in the Parish Hall on November 12th at 2.30 p.m.

The next meeting will be at 2.15 p.m. on October 25th in the Parish Hall.

## NEW MAGAZINE CORRESPONDENTS

Miss Elizabeth Codd is to report for the Rendezvous, and Mr. Malcolm Thomson for the Men's Society. Previously Keith Blackburn has reported for both these societies.

## THE CHURCH OF ENGLAND CHILDREN'S SOCIETY

(Mrs. D. Simons)

Congratulations and thanks are extended to Janet and Elizabeth George, Erica Simons and Helen Hudson, who raised £10 at a Coffee Morning on August 17th.

## PARISH HALL APPEAL FUND

A Coffee Morning will be given by Mrs. Bird, Mrs. Felton and Mrs. Freeman at Mrs. Felton's house, 92 Green Oak Road, on 20th October, between 10 a.m. and 12 noon.

## WHIST DRIVE

The next whist Drive held by the Appeal Committee will be on Friday, October 21st at 7.30 p.m., in the Parish Hall. Tickets for this cost 2 -.

## HAUL FOR THE SHORE

Don't forget to buy a ticket for this production of the Drama Group.

Tuesday to Saturday, October 4th to October 8th. Tickets 3/- (Old Age Pensioners 1/6 on Tuesday and Wednesday).

## SYMPATHY

We remember in our prayers Mrs. Mayor and Edward and Margaret in their bereavement. Mr. Mayor had been ill for several years, and had borne his illness with great courage.

## IS IT MY TURN ?

### ALTAR FLOWERS

Oct. 2—Mrs. Kirkman.

Oct. 9—Mr. Sanderson.

Oct. 16—Mrs. King.

Oct. 23—Mrs. Walters.

Oct. 30—Miss Harris and Mrs. Whitehouse.

## MAKE A DATE

**Cheese and Wine Party**  
on **NOVEMBER 4th**  
in the **PARISH HALL.**

## PARISH REGISTER

### BAPTISMS

Aug. 30—Simon James Houston.

Aug. 21—Helen Louise Kershaw.

Sept. 4—Wendy Elizabeth Bolton.

Sept. 4—Stephen John Holding.

Sept. 11—Susan Jayne Mumby.

Sept. 11—Nicola Bridges.

Sept. 11—Caroline Felicity Moore.

### WEDDINGS

Sept. 3—Robert Tinker and Margaret Mactaggart.

Sept. 10—Donald Jarvis and Margaret Turton.

Sept. 10—David Treweek and Carol Squiers.

Sept. 17—Christopher Hustler and Maureen Roberts.

Everything for the  
Home Decorator

**H. J. PURDY**  
(London, City and Guilds)

88 BASLOW ROAD,  
TOTLEY RISE

Phone 364836

Canadian Wallpapers and Murals  
40 Pattern Books of Crown, Sanderson  
and Continental Wallpapers  
Dulux, Brolac, Valspar, Pammastic  
Magicote, Duradio, Siscomatte, Jellipex

## S. H. WESLEY & SON

187 BASLOW ROAD

Newsagent, Stationer  
and Tobacconist

Sweets and Chocolates  
Tel. 363883

Fancy Goods. Toys etc.  
Lyons Ice Cream  
Agent for Arthur Dixon, Royle,  
Hall Mark, and Continental  
Birthday Cards  
Every Popular make of Stationery  
in stock

Open until 1 p.m. on Sundays

## THE BABY BAR

57 BASLOW ROAD

Tel. 361059

Specialists in Babies and  
Infants Wear

Stockists of: Tick A Tee.  
Harrington. Kamella. Ladybird.  
Clydella. Bairnsweat. Shamrock.  
Ladies Hosiery: Ballito & Kayser

## S N O W I T E

*the laundry that does —*

EXCELLENT

DRY CLEANING

Telephone 50051

## JOHN BONNER

Newsagent

Rust Craft, Gordon Fraser  
and Noel Tatt Greeting Cards  
Holkham Hand-made Studio  
Pottery, Hornsea Pottery,  
Swedish Wood and Glassware,  
Hardware, Horticultural Sundries

15/19 BASLOW ROAD,

Totley Rise

National Health  
Prescription Dispensing

Phone 361070

## CHEMIST

**W. T. HUTCHINGS, M.P.S.**  
TOTLEY PHARMACY,

185 BASLOW ROAD, TOTLEY  
SHEFFIELD

## FRANK PRIEST

253 BASLOW ROAD

Tel. 360583

Groceries and Provision  
Fresh Fruit & Vegetable

Our Speciality:  
Prime Grade 'A' Danish Bacon  
Delicious Fresh Boiled Ham  
Always a good selection  
of Cheese

Orders Delivered

## S. J. MAYNARD

160 BASLOW ROAD

TOTLEY

Tel. 363812

Hardware Ironmongery

China Paints

Garden Requisites

## R. ORME & CO. LTD

Groceries & Provisions

Wines, Spirits & Beers

at

TOTLEY

NETHER EDGE

BROOMHILL

and BAKEWELL

## John Heath & Son

The Leading Funeral  
Directors

A reverent and helpful service  
which has continued through  
five generations

14 EARSHAM STREET,  
SHEFFIELD 4

Telephone 23229

Enjoy the Social atmosphere at  
**ABBEYDALE HALL**

**The Totley and District  
Community Association**

Thursday, 7.30 p.m.  
Table Tennis, Old Time  
Dancing, Cyclists  
Thursday and Saturday, 7.30 p.m.  
Whist

New activities welcomed  
Call at the Hall or write to the  
Sec.: Mrs. E. M. Skinner,  
2 Laverdene Close, Totley

**LAURENCE TYM**  
Family Butcher  
51 BASLOW RD. Totley Rise  
Tel. 360558

68 BASLOW RD. Green Oak  
Totley  
Tel. 361088

We Guarantee Satisfaction  
Orders Delivered in Your District  
Local Fed and Dressed,  
Beef, Pork, Lamb

**THE MARSTONE  
GARAGE LTD.**  
(Official R.A.C. & A.A. Repairs)

Petrol, Oil and Paraffin  
Repairs and Service  
Tyres—New & Remoulded Service  
New and Used Cars  
V.I.P. Petrol and Oils

**TOTLEY RISE, SHEFFIELD**  
Telephone: 363328

Tel. 360997 (Totley Rise)  
360420 (Dore)

**COLIN THOMPSON  
& SON**

Butchers and Farmers  
(Established 1867)  
**TOTLEY RISE and DORE**  
Orders Delivered  
Home Fed Pork and Beef  
Prime Quality Lamb and Veal  
Home Made Potted Meat and  
Sausage. Poultry, Bacon & Eggs

Members of the National Federation  
of Fishmongers and the British  
Turkey Federation

**E. CHAMBERS & SON**  
FISHMONGERS

LICENSED GAME DEALERS  
TABLE POULTRY SPECIALISTS  
Established 1899

**TOTLEY RISE & HEELEY**  
GREEN, SHEFFIELD  
Tel.: 360806; 50623; 364221

Telephone: Sheffield 3 6 0 7 7 4

**VICTOR WILKINSON  
& Sons**

PRACTICAL STEEPLE-JACKS  
BUILDING CONTRACTORS  
WORKS MAINTENANCE  
PROPERTY REPAIRS FLUMING Etc.

**1 MAIN AVENUE, TOTLEY**

*WHEN IN SHEFFIELD VISIT . . .*

**Punch  
Stores**

**Castle Market**

*Specialists in  
Biscuits and Sweets*

CONTACT

**MEECO**

*for everything Electrical*

Works:

**129 ST. MARY'S ROAD, SHEFFIELD 2**

'Phone 7 8 3 2 7 / 8

Shop:

**284 GLOSSOP ROAD, SHEFFIELD 10**

'Phone 2 4 0 2 6

*Contractors for the new Parish Hall*

**GRINDROD  
HEATING**

— ALL SYSTEMS —  
— INDUSTRIAL and DOMESTIC —  
— BY ALL TYPES OF FIRING —

designed and installed by

**ALFRED GRINDROD & CO. LTD**  
**122-134 CHARLES STREET · SHEFFIELD 1**

TELEPHONE: 27591 (3 Lines)

Over 100 Wines and Spirits in  
Stock at

**BROADHEADS**

*your Mace Grocers*

Open 8.30 a.m. to 10.30 p.m.

Orders Delivered

**158 BASLOW RD., TOTLEY**

Tel. 360187

**ANGELA**

*Fashion Colour—Styling  
and a fantasy style for that  
special occasion*

**86 BASLOW ROAD,  
TOTLEY**

Telephone 3 6 3 4 0 9

We specialise in the smallest  
feature that makes your home  
different — to the major  
conversion

Consult . . .

**KENNETH LEE  
(Calver) LTD.**

**COPPERFIELDS,  
CALVER,  
Via SHEFFIELD**

Phone Grindleford 469  
and Sheffield 363409

**R. DAMMS**

**BOOT and SHOE REPAIRS**

**63 BASLOW ROAD,  
Totley Rise, Sheffield**

Your Comfort is OUR Concern

**F. E. BRAMALL**  
Dairyman

Fresh Milk Delivered Daily  
Eggs and Farm Produce

**HALL LANE FARM**  
**TOTLEY**  
Tel. 361589